

Appendix A

Play Sufficiency Assessment Form



Llywodraeth Cymru
Welsh Government

Name of Local Authority: Swansea Council

Name of responsible officer: Stephen Cable

Job title: Childcare & Play Sufficiency Manager

Date of completion:

Please note that the Play Sufficiency Assessment must be received by the Welsh Government by 30 June 2022



Conducting the Assessment – Play Sufficiency Assessment

As well as establishing a baseline of provision, the Play Sufficiency Assessment will enable the following:

- Identification of gaps in information, provision, service delivery and policy implementation
- Support the establishment of evidence to give an indication of distance travelled in relation to play sufficiency
- Highlight potential ways of addressing issues relating to partnership working
- The input and involvement of all partners increasing levels of knowledge and understanding
- A monitoring system which will involve and improve communication between professionals
- The identification of good practice examples
- Increased levels of partnerships in assessing sufficient play opportunities
- The identification of actions for the Securing Play Sufficiency Action Plan which accompanies the Play Sufficiency Assessment

A template has been produced to support a corporate appraisal of the matters that need to be taken into account as set out in the Statutory Guidance. The indicators listed within each matter are provided as sample indicators which should be amended to meet local issues as appropriate.

The Play Sufficiency Assessment must demonstrate that the Local Authority has taken into account and assessed the matters set out in The Play Sufficiency Assessment (Wales) Regulations 2012 and Statutory Guidance.

As well as providing baseline information, the Assessment can include examples of current practice that the Local Authority wishes to highlight.

Local Authorities might consider structuring the Play Sufficiency Assessment in the following way and as a minimum address all the identified sections.

Principle Statement

This section should be used to articulate the Local Authority's acknowledgement of the value and importance of play in the lives of children.

The City & County of Swansea has a long-held and proud history of valuing and providing for children and young people's play opportunities as an essential component of their healthy development.

After introducing the Children's Play Officer post in the late 1990's and a Children's Play Team shortly after, Swansea's original Play Strategy was developed in 2003, as a cross-sector partnership document, with its 5 objectives being;

1 To ensure there are high quality, appropriate, accessible and resourced play opportunities for all children and young people across Swansea.

2 To put play in the spotlight, advocate for and on behalf of children and young people, their need to play, and promote greater awareness of the role of play in child development and benefits of play for everyone.

3 To consult, observe, involve and work in partnership with children and young people and other agencies in the planning and delivery of the strategy and play service.

4 To raise the quality of playwork practice, by promoting the development of training and appropriately qualified staff.

5 To increase the value of play spaces in Swansea in terms of design, location and maintenance so they meet the needs of children and young people.

The Strategy has been subject to 3 year action plans to implement the Strategy in 2007, 2010 and 2014, the latter being heavily influenced by the PSA.

Significantly, the Strategy has not been updated since 2014, but this was primarily due to a recognition that the Play Sufficiency Assessment and associated action plan had largely superseded the strategy. However, it may be beneficial to revisit this.

Swansea's approach to play has long been focussed around cross-sector working and Swansea was traditionally fortunate that the third sector has had a strong presence and commitment to play. Although as previously documented, the closure of Play Right in 2016 has had an impact especially given that it was the area's third sector play association having been in existence (including in its previous incarnation as West Glamorgan Play Association) since the mid 1970's. Whilst there continues to be a strong 3rd sector presence, there has been no direct replacement for Play Right.

Additionally, Swansea demonstrates its commitment to the embedding of Children's Rights in all of its work. Swansea was the first LA in Wales to do this and sets out arrangements for implementation in its Children and Young People's Rights Scheme. These two areas go hand in hand as Swansea's approach to play is that it is a child-led process by which children learn about the world around them including identifying their own values and beliefs, which naturally echoes children's rights.

In practical terms, there is a very close working relationship between play and children's rights, with every Play Network meeting having an agenda item of Advocating for CYP and Play led by the CCS Children's Rights Officer.

Alongside this recognition of play being every child's right, Swansea is rightly proud of what it has achieved to ensure that every child has this right met, regardless of need or personal circumstance. Significant progress on addressing inclusion and cohesion has been made, with some very positive results.

In the 10 years from 2005 to 2015, Swansea's approach had been very much driven by play's role as an essential element of community engagement and regeneration. The principle has been of play being delivered 'in the community, by the community' wherever possible. Support was available to develop this, or direct delivery existed to compensate where this wasn't happening.

It is noteworthy that during that time responsibility for play moved amongst a range of services and directorates. From Recreation within Culture & Tourism, it moved to Community Regeneration in 2007, and again into Education Effectiveness in 2011. Throughout the 6 years from 2013 to 2019 it has sat within Early Years under Prevention & Early Intervention, latterly within the Poverty & Prevention Service.

Following a review of early intervention services between 2019 and 2020, the delivery element of play that comprised the Play on Wheels team and the Family Play Support Workers moved across into the newly formed Early Years Early Help Team.

At the same time, the elements of Swansea Play Service that related to play development and sufficiency were retained under the Family Resources Team and being located within Partnerships & Commissioning.

Whilst the responsibility for developing play lies with the Partnerships & Commissioning Service, there is a general recognition across the authority of the positive impact of play. This is something that has increased significantly in recent years and now play sits high on the agenda in a range of cross-departmental policies and initiatives.

Context

This section should describe the methodology used to undertake and approve the Play Sufficiency Assessment and Action Plan and any consultation with partners on the Assessment/Action Plan. It should also list the key partners that engaged with the process and identify any challenges in undertaking the Assessment. It should describe the mechanism that the Local Authority proposes to use to take forward the identified actions for the action plan.

Responsibility for completing the 2022 Play Sufficiency Assessment lay with Swansea Council's Childcare & Play Sufficiency Manager. It is beneficial that Swansea has had the same lead officer for the 2013, 2016 and 2019 assessments, to support completion and identify relative progression / regression.

Having previously commissioned Swansea University to undertake the original 2013 assessment, locally identified preference was for officers directly involved with play sufficiency to have a more hands on role in the assessment. This was due to the belief that links generated during the assessment will more readily be able to be acted upon and it increases local knowledge.

As such, the 2016 and 2019 assessments were undertaken by Childcare & Play Sufficiency Manager with support from the Play Development Officer. Both officers have been committed to the Local Authority for a number of years and therefore, they have witnessed play develop within Swansea. They are able to recognise strengths, shortfalls and actions which is paramount when completing the Play Sufficiency Assessments. Their longstanding and continued dedication enables them to recognise how best to advocate and further establish play for the children and young people of Swansea.

Additionally, given that the role of Childcare & Play Sufficiency Manager was created with a view to leading on both the Childcare & Play Sufficiency Assessments, and that both assessments were due for submission in June 2022, it was decided to create a Sufficiency Assessment Support Officer post.

This role was filled in September 2021 and the postholder worked alongside the Childcare & Play Sufficiency Manager on completion.

Consultation and engagement was key in the development of the Assessment, with identified officers and external partners engaged on specific matters as well as in relation to particular topics, e.g. access to play or the right to play.

Drafts were sent for comment in February and April 2022 prior to submission, as well as holding feedback sessions for partners to hear of emerging trends and issues.

Partnership working

This section should demonstrate to what extent the following (and others) were involved in the undertaking of the Assessment and the development of the action plan:

- Town and Community Councils
- Third sector organisations, particularly play associations and play providers
- The private sector if appropriate
- Community groups

Partnership working has long been the driver of play planning and delivery in Swansea for many years with a recognition that this will lead to greatest success and impact.

Swansea's Play Network and its associated sub-groups have been the focus of this for the past 10 years, however there has certainly been a detrimental shift over the past 2 years in particular.

The Play Network has not met in person since March 2020, due to Covid-19 and its associated restrictions. There have been virtual on-line discussions during this time but it is noticeable that communication and development has reduced.

Inevitably, over the past two years, the focus of many has shifted towards responding to the pandemic and it is apparent that opportunities to contribute to networks and partnerships have reduced accordingly.

It is worth acknowledging at this point, that the independent Chair of Swansea's Play Network stepped down from his role in late 2021. The Chair of the Network has been a vital champion for play over the past 15 years through roles within the local authority, as a trustee of the play association Play Right and for the past 10 years, despite having retired, as Play Network Chair.

The local authority enjoys a close working relationship with all key third sector organisations that deliver or support play and they have all been engaged via

contributions to the network as well as receiving surveys such as the sector survey and workforce development surveys.

Given that the PSA is being completed alongside the Childcare Sufficiency Assessment, there have been engagement opportunities that contribute to both.

Community groups and play projects were invited to attend engagement sessions as well as being recipients of a number of surveys in relation to play sufficiency.

Consultation and participation

This section should describe how the Local Authority has:

- Obtained the views of children with regards to the play opportunities they currently access, how they would like the community to better support them to play and what barriers stop them from playing
- Obtained the views on play provision from parents, families and other stakeholders
- Analysed the information and how it has been used to inform future plans

It is worth noting that the Coronavirus Pandemic and the restrictions that came with it has made it difficult to engage with as many people as the Local Authority usually would. Due to restrictions, the Local Authority could not access as many schools/ early years settings compared to previous assessments.

A virtual meeting was held on the 23rd of November 2021 with local childminders and PACEY Cymru. During this meeting, childminders were informed about the PSA and offered Children and Young People engagement sessions.

Play Sufficiency 2022 Workshop 1 ‘The State of Play in Swansea’ – Wednesday 20th October 2021, On-line session

During the workshop it was highlighted that Swansea Council supported families with playpacks during the first lockdown which resulted in stronger family bonds and made lockdown easier for children and their families. It was also noted that parks have developed with new parks being created and existing parks being enhanced. It is clear by the attendance levels of play meetings that different departments within the Local Authority now understand the importance of play.

However, the workshop did highlight some actions to concentrate on over the next 3 years. These included offering play delivery over the holidays with one person stating ‘play delivery in Swansea needs working on’. It was also noted that funding is a barrier when it comes to finding staff as long term contracts can not be offered.

When discussing plans to move play forward in Swansea it was noted that play needs to be more inclusive, there needs to be a focus on upskilling the workforce and there needs to be more a re-establishment of play.

Play Sufficiency 2022 Workshop 2 ‘Meeting Every Child’s Right to Play’ – Wednesday 3rd November 2021, On-line session

This session stated how accessibility and inclusivity for all is becoming far more recognised by all which is helping create play opportunities for children with disabilities. Participants mentioned how the new parks are positive especially as they are created with an eye for accessibility. One participant said the following *'Swansea Council can be proud of the fact they understand the need for integration'*.

Throughout the discussion it was highlighted how the Play Team have moved across to Early Help Hubs. Participants mentioned the importance of Child's Right to Play and were intrigued to know how the new play offer would impact this right. Participants mentioned how beneficial they found the play bus and were hopeful that something similar would could be carried out under the new play offer.

The discussion moved on to answering 'what is needed?' with the whole group agreeing that funding and a play workforce are both essential to meeting every child's right to play. Some extra suggestions included;

- *'ALN play space needed to be accessed at anytime'*
- *'Support and knowledge is needed'*
- *'To speak to the correct people when opening new provision'*
- *'Play area gates can be difficult for wheelchair users to access.'*
- *'Access is so important'*
- *'Children need to be consulted'*
- *'People/families want a shelter where they can sit together.'*
- *'Teenagers are currently stealing benches etc from the elderly/further community'*
- *'Listening to the voices of everyone!'*

Children and Young People (CYP) Findings:

The Local Authority undertook engagement sessions within primary schools in Swansea on the following dates;

- 9th of October in Clwyd Primary,
- 9th of November in Glais Primary,
- 18th of November in Hafod Primary,
- 26th of November in Sketty Primary.

These sessions encouraged children to express their views on play. 2 of these sessions were carried out as focus groups.

Out of the 181 children and young people consulted with, 9 of them were between 0 and 5 years old, 161 of them were between 6 and 10 years old and 11 of them were between 11 and 15 years old.

- ***Out of the 181 children engaged with face to face and through the CYP survey, only 114 of them felt they had sufficient opportunities to play (63%) which is lower than the 2019 assessments findings (79%).***
However, the majority of children mentioned that COVID-19 restrictions have made it difficult to have play opportunities which could be a factor influencing this result.

181 children were asked how Swansea Council could help them play more often, the findings are presented in the table below:

How could we help you play more often:	%
Make it safer	36%
Make it cleaner	21%
Tell adults you need to play	14%
More parks and play areas	57%

During the focus groups carried out at both Hafod and Sketty Primary schools, children expanded on their answers to this question and were able to tell us the following:

- *'Tell teachers we need more play'*
- *'We need shelter to play in the rain'*
- *'Parks need to be cleaner'*
- *'More parks could do with a 'make over''*
- *'The litter in the park is damaging our play and the earth'*
- *'Someone broke their arm on the slide and it got taken away but it's more exciting equipment which we need'*
- *'Always dog mess in parks, despite signs'*
- *'Bins aren't emptied often enough so litter is always on the floor'*
- *'Older children/teens are running parks'*
- *'Park equipment needs to be accessible for all'*

Based on the answers from the CYP consultations and survey, it is evident children value play opportunities. A large majority of children reported feeling 'happy' when engaging in play. However, the number of children that mentioned being 'lonely' and 'bored' had increased compared to previous assessments. During one of the focus groups held at a primary school one child mentioned; 'play can be a big mix of emotions' while another said 'play can be difficult because choosing a game takes a lot of problem solving'.

In 2019, it was clear that children found time as a barrier to play with 29% of children saying they were too busy to play. However, this seems to have changed with the majority of children now mentioning the safety of play as a barrier. The children that participated in the focus groups spoke about the fears parents have about them going out to play with friends. Children mentioned the use of tracking apps on their devices in order for their parents to have reduced worry when they are out playing. This is not something that has been mentioned during the previous assessment's consultation sessions.

We asked children and young people 'when you go out to play, what are the rules?' and the results shown that the majority of children were not allowed out alone but were able to go out to play with friends. Only a small percentage of children said they don't go out at all.

During the consultation sessions and as part of the CYP survey, children were asked who they felt were the best adults at helping them play. The children were given the choice between: parents, teachers, playworkers, no adults, other family members or

other, with the most popular answer being parents. Interestingly, the lowest response was playworkers with only 6 children choosing this as their answer. During the focus groups there were a number of children that asked 'what is a playworker?' showing playwork is becoming **less** recognised by children.

When children and young people were asked where they like to play/hang out, most children said 'the park' but a few children and young people mentioned they enjoy playing at home/indoors. In terms of their local area, the majority of children and young people mentioned they can do some of their favourite things.

Early Years Settings:

In order to obtain the views of younger children (2 and 3 year olds) engagement sessions were carried out in Early Years settings. The children were observed while playing to understand their play preferences. These sessions took place at Manselton Playgroup, Penllergaer Wraparoud and St Helen's Flying Start.

By carrying out consultation through the use of observations, we were able to see that children in this age range were enjoying the following:

- Home corners e.g kitchen playsets
- Figures/ small world activities
- Sand/water trays (this type of messy play had been suspended during COVID)
- Outdoor play

It was clear from observing the children that they preferred free play and exploring different areas of play.

Parent/Carer

Parents and Carers were consulted with through the use of a survey on Microsoft forms which was circulated on the Swansea Council website and social media. The survey was available bi-lingually.

53 parent/carers participated in this years survey and 37 of them (70%) felt their child/children **did not** have sufficient play opportunities, while only 13 out of 53 (24.52%) felt their child/children had sufficient play opportunities. This is significantly lower than 2019, where 75 out of 124 (60%) of parent/carers were satisfied with their children's opportunities to play. As this was an open-ended question, parents were able to express their views and added comments shown that parents feel there are issues with accessibility to play, safety issues and lack of organised play delivery.

Parents/carers were asked 'what would help your children have more opportunities to play?' and the majority of respondents mentioned parks and play areas, other trends included organised play sessions and play being accessible for all. When asked 'where do your children like to play?' 42% of respondents answered parks. This is similar to the 2019 results, where 50% of parents and carers answered parks.

Parents/carers were asked 'how can we help your child/children play more often?' more parks and play areas was the most popular answer with 67.92% along with more play clubs shortly behind with 65.38%. 64% of parent/carers felt that where they live did not provide sufficient play opportunities.

General Public

A survey was created to hear the opinions of the general public in Swansea. This was circulated on the Swansea Council website and social media. This survey was available bi-lingually.

We asked the general public 'how important do you feel play is to children and young people?' with 91% of participants claiming play is essential. The majority of participants felt there was not enough being done locally to provide play opportunities for children. Some added comments included: 'no, especially when schools are too risk averse and in lockdowns' and 'there are some initiatives but more local outreach work needs to be done'.

'What could be done generally, to increase play opportunities?' was asked as an open ended question and these are some of the responses:

- *More parks and indoor play areas that aren't expensive*
- *More use of outside*
- *Improvement to local park facilities, play teams, organised activities, youth clubs and free events.*
- *The parks need proper ground not grass with dog poo on*
- *Reduce traffic speed and number of vehicles in residential areas*
- *Preserve green space*
- *More places for teenagers such as youth clubs*
- *Educate parents on benefits of play*
- *Free spaces- play workers available during school holidays- play ground-traffic free spaces*
- *Bring back the play bus as a matter of urgency. Those services have been mercilessly stripped from existence having served children for many years*
- *Provide open access play provisions in deprived areas - I used to work in one which has now been stopped. I'm very disappointed for the communities that benefitted from this service, they will now be left with nothing to support this right.*

99% of participants felt children and young people are playing less now compared to 10 years ago. When they were asked to explain their answers, parental fears, technology and COVID were named as barriers to play.

Professionals

When promoting this survey, we made it clear that anyone that uses play as part of their profession were welcome to participate, 27 professionals took part. When asked 'please describe your role' participants listed roles such as: nursery nurse, play development, primary teacher and baby group provider, childcare and play sufficiency manager, senior playworker, active young people coordinator, play scheme organiser, nursery manager, charity manager, early years help worker, manager of playground maintenance team, local authority lead/project manager property/public realm regeneration project officer.

The majority of professionals that took part in the survey had been within play for 10+ years and very few selected 2-5 years as an option, this indicates there are fewer people choosing a career that involves play.

Participants were asked if they felt their role was having an impact and if so, how could they tell, these are some of the responses:

'My particular role is having an impact as it is become more strategic as play has experienced less commitment and investment'

'Some elements are working well which is evidenced by commitments to support play, notably play spaces.'

'The recent loss of playwork suggests the role played by staffed provision was not fully recognised'

'yes . . . children and parents tell me about how they enjoy it and how it has changed their attitude to play'

'Looking back 25+ years, yes it has had a positive impact, previous attendees of the playscheme return as adults with their children and have told us how important it was, some return as playworkers and current parents of children tell us how essential it is for their child's happiness.'

When asked 'Do you feel the role of the playworker is becoming more or less essential, and why?' all 27 participants reported the role of the playworker is becoming **more** essential. However, when asked 'Do you feel the role of the playworker is recognised and valued?' only 5 out of 25 participants answered 'yes', 19 answered 'no' and 3 answered 'not sure/sometimes'.

The participants were then asked 'Do you think more can be done by playworkers and others to improve play opportunities locally?' and the majority responded with yes followed by suggestions such as: *'Develop more community-led/based play'*. *'Not within current constraints, local authorities need to have funding for permanent staffed play provision'*. *I think it is very hard to make a difference without the hours and the funding to back it up.* *'More funding - clubs to enter schools'*, *'Keeping play on the agenda does require a lot of background work liaising with planning schools childcare etc so need to have staff in strategic and planning positions also'*. *'Further resources , funding and strategies for play services and provision and an awareness of the benefits of play for all'*.

Finally, participants were asked 'As this assessment if completed every 3 years - what are your hopes and fears for how play will look in 2025?' some comments included:

'I hope play opportunities will increase locally for all ages. I hope safe environments will be created where children can safely play and develop. I hope to see an increase in the recognition of play and it's values along with all the workers who are specially trained in such an important sector of children's lives.'

'We rebuild the strong Play infrastructure with committed funding. We make playwork attractive again. We continue to strengthen the understanding and commitment of the wider Play workforce. We gain a positive relationship with Education and schools. We become a Play Rights City!!'

'A playful society will be developed that includes the very young to the very old. Society will benefit from less depression, loneliness and enable children to develop through positive play experiences'

'That funding is on a more predictable footing, especially for 3rd sector providers, full time play settings established, after school adventure playgrounds, and other staffed play provision, not care settings.'

Consultation Key Findings

- Increased view from parent/carers that their children do not have sufficient access to play.
- A recognition that the role of Playworker is more essential, but a view that it isn't valued
- Funding is a barrier to finding staff as long term contracts can not be offered
- Children would like play opportunities to be safer
- Children do go out to play alone and with friends, however, many children mentioned they need tracking devices to do so.
- General Public feel children are playing less now compared to 10 years ago.

Recommended Actions

- Promote the role of playwork as part of an awareness campaign on play's importance
- Focus on upskilling the workforce
- Re-establishing community play
- Listen to the opinions of parent/carers on how the Local Authority can improve play opportunities for children
- Work with parent/carers to understand concerns they have when children go out to play.

Maximising resources

This section should provide an overview as to how partners currently use their existing budgets to support children's access to play opportunities. It should identify how budgets have been reprioritised as part of the 2022 Play Sufficiency Assessments and subsequent plans.

Please use this section to highlight what has changed since the 2019 Play Sufficiency Action Plan in terms of how resources are allocated.

Please also highlight how Welsh Government programmes have been used locally for the provision of play and how they have addressed priorities from your 2019 play sufficiency assessment:

Prior to the 2021/22 financial year, the majority of play and playwork provision was funded via the Families First programme within the Welsh Government Children & Communities Grant.

Traditionally, there has been a relatively modest core budget for play which has fluctuated around the £100,000pa mark for the past 10 years. This funding covers the posts of Childcare & Play Sufficiency Manager and Play Development Officer as well as some associated operational costs. This core commitment is essential as having established posts with a remit for play allows for the acceptance and administration of additional grant funding. Notably, this £100,000 commitment to play core funding led to

an additional £444,000 of funding for play, or considerably more if the Summer of Fun and Winter of Wellbeing funding that came via the All Wales Play Opportunities Grant is factored in.

The past two years have seen a re-structure that has impacted on how funding is used to support play. The review of early years services incorporating a range of projects including the Families First-funded Play on Wheels and Family Play teams had identified that services should be more closely linked.

Following a series of engagement events and stakeholder sessions, it was recommended that these teams merge with the Early Language Development and Mobile Childcare Teams as part of a new Early Years Early Help Team.

With the proposal that all staff included within this review receive new generic job descriptions points were raised by the Childcare & Play Sufficiency Manager and Play Development Officer which mentioned how this review would give play in Swansea a divergent look compared to how it has been historically.

The All-Wales Play Opportunities Grant (AWPOG) provided by Welsh Government to support play sufficiency has had a considerable impact in recent years. Significantly, the proposal that AWPOG funding will be made available annually at the start of each financial year has allowed Swansea to develop a structure for play sufficiency.

The All Wales Play Opportunities Grant capital and revenue funding has benefited play in many ways from 3rd Sector Sustainability Grants and Play Space Capital spends since 2019 – investments in spares and repairs, replacements and Victoria parks (accessible and inclusive) and Llansamlet play areas.

2019/20 Twelve 3rd Sector organisations were supported with a Play Sufficiency Grant.

2020/21 Victoria park and Llansamlet play areas had complete refurbishments, over thirteen 3rd Sector organisations received Play Sufficiency Grants, Thermo Activity Trails for parks were piloted, spares and repairs and replacement equipment for parks (including DDA equipment).

2021/22 PSA Capital grant knitted up with council investment in play areas with a heavy weight towards accessibility and inclusivity. We again furnished Parks with spares and repairs as well as replacement equipment. This can significantly reduce play equipment being out of action for many months. The Local Authority are particularly proud of the partnership work with the Health Board with regards to the 100 Communication Boards using pictures and words to support communication in our play spaces being rolled out to every play space across the County.

During the 2021/22 financial year the Local Authority, led by Cabinet Members, committed over £1million into improving play areas. The initial methodology was that each ward was awarded £30k and the ward was expected to contribute an additional 20%. This worked well in some wards as Ward Members would pool further resources to increase their available pot to make significant changes to one or sometimes more play areas within their ward. The 1million investment soon amounted to a £2million investment with the amalgamation of funding.

Facilitating this work has taken a collaborative approach. It has been challenging ensuring smooth procurement processes, securing contractors and dealing with shortages of materials.

This investment in play spaces has proved really popular and very much needed. Covid has really highlighted the need for children to be out and have spaces to access and play. These improvements have also highlighted to decision makers issues around accessibility

As a result of this initial investment in play spaces, colleagues from Parks and Cleansing submitted a further bid to the Local Authority's Economic Recovery Fund (ERF) to continue the investment in equipped play spaces and they successfully secured an additional £1.4million (22/23). With a further commitment of £500,000+ to invest in skate feasibility. At the time of writing, there is support to submit a further Play Sufficiency ERF bid to improve inclusiveness. If successful, this will complement the current delivery of improving play grounds. Which has proved popular with the children and young people and communities of Swansea.

Maximising Resources Key Points

- The impact of the re-focussing of posts delivered via Families First on play delivery

Recommended Actions

- Identify the most effective means of utilising core funding, Children & Communities Grant and the additional AWPOG Playworks funding to achieve play sufficiency

The Play Sufficiency Assessment and local Well-being Plans

This section should identify how the Play Sufficiency Assessments form part of the local needs assessment and to what extent the Play Sufficiency Assessment and Action Plan are integrated into the Well-being Plan and Public Service Board.

Play and Play Sufficiency are recognised within Swansea's Wellbeing plan, predominantly through the target of giving every child the best start in life. The importance of play features within the priorities for associated work.

The 2022 Play Sufficiency Assessment will be tabled in July's Public Service Board to provide an opportunity to discuss findings.

Monitoring Play Sufficiency

This section should identify the lead director and lead member for children and young people's services. It should also describe the Play Monitoring Group or equivalent. Along with a list of members, please describe how the group has been facilitated and the benefits and challenges of the group.

Responsibility for assessing and monitoring play sufficiency lies with the Childcare & Play Sufficiency Manager (CPSM). This role sits within the Early Years Programmes Team of the Partnership and Commissioning service within Social Services with the Lead Commissioner as Head of Service.

This is a relatively new development, from March 2021, as play sufficiency moved from education effectiveness. The CPSM was joined by the Play Development Officer, with those staff involved in the delivery side of play, i.e. Family Play Support Workers and Play on Wheels team moving to the new Early Years Early Help team.

Prior to May 2022, The Cabinet Member for Opportunities for Children & Young People, Councillor Elliott King had Play Sufficiency forming part of his portfolio. However, it should be noted that 'play spaces' form part of Cllr Robert Francis-Davies's portfolio, as the Cabinet Member for Cultural Services.

Additionally, the administrative changes that occurred post May 2022 will likely impact on responsibility for play, however, this cannot be referenced at this time.

As detailed above, Swansea's Play Network is responsible for monitoring play sufficiency across sectors. The Network has been engaged with identifying key issues and actions to address them.

Key Findings

- With responsibility for play cutting across two portfolio's, there would be benefits to closer engagement between the 'play sufficiency' and 'play provision' leads.

Recommended Actions

- Re-establish a Play Sufficiency (formerly Network) Board to assess key findings and implementation of actions.

Insights from the Coronavirus

This section should discuss the impact the Coronavirus has had on the local authority's ability to progress Play Sufficiency Actions.

Covid-19 has had a considerable impact on both the ability to progress Play Sufficiency actions and on play sufficiency in general.

An initial assessment was made in April 2020 by revisiting the RAG grading of the 9 Matters as identified in 2019.

This significantly identified an increased gap in play opportunities for those with either limited play space and facilities in and around their home or those shielding or with family members who were vulnerable.

There have been some positive and significant movements in support of play sufficiency that have resulted from Covid and particularly periods of lockdown and other restriction.

One example being that during mid-2020 in particular, there were far fewer cars on the road and children and their families were encouraged to get out in their local area to exercise together. Families were discovering unknown informal play spaces and experiencing their benefits.

There have been examples in Swansea of where 'woodland den villages' springing up beside residential areas because families have enjoyed more time to play together and the opportunity to get out more.

Covid created more direct Play Service actions and responses beyond the 2019 PSA actions. Some examples are as follows:

- The Swansea Play Service created and developed 2000+ playbags to vulnerable families. The doorstep drops were beneficial as they afforded the opportunity to have engagement with the community during a time where it was difficult to connect with others.
- 1 to 1 play sessions within the community when appropriate.
- Online family support play sessions using Theraplay techniques.
- Being ready to deliver critical childcare, delivering critical childcare and improving the play experience for the children whilst there.
- Significant social media presence with lots of ideas, links and support.
- Significant dialogue with Play Wales for resources and support.
- Play Development Officer continuing to work alongside Parks Colleagues to consult, when appropriate, and work with colleagues and contractors developing play spaces
- Activity Play Trails pilot in parks – thinking about Children, Young People and Families who may not feel comfortable using the busy play areas (or when the play areas were closed). Supporting a walk in the park to be more 'playful'. We have more of these play trails to roll out into further parks when capacity allows while with the installation team.
- Working with 3rd sector play partners through the ever/daily ever evolving landscape of legislation and guidance to support delivery when possible.

HAPPEN Survey

A study was carried out by Swansea University with the aim of identifying the predictors of wellbeing for children and young people during the pandemic. The data collected was facilitated by two online surveys; the 'HAPPEN' survey (8-11 year olds) and the 'COVID and Young People' survey (11-25 year olds). The data was collected over 5 months and 6291 children and young people participated from all over Wales.

The data was analysed through the use of thematic analysis with three main themes highlighted:

- physical health
- being with friends
- coronavirus concerns.

The 'COVID and Young People' survey highlighted that 11-25 year olds had concerns over lack of mental health support, exam pressure and uncertainty around future prospects.

Primary school aged children mentioned they needed physical activity to improve their happiness. They mentioned that '*longer time to play*', '*eating healthy*' and '*time in the park*' would help. As well as this, primary aged children mentioned the desire to socialise more to improve their happiness. For example, they said they wanted to 'live closer to my friends', 'be with my friends more' and 'being able to access play places with my friends more'. Many children of this age group voiced their opinions on ending covid rules and 'getting back to normal'.

The main factor that children reported as affecting their wellbeing was the ability to play with friends and playing alone was highlighted as being associated with having emotional difficulties.

The study suggests that omit children having opportunities to play with friends could help improve emotional wellbeing and this should be considered during COVID recovery plans. It was also claimed that it is vital to children's wellbeing that they have safe spaces to play post covid to help reduce anxiety and promote socialisation once more.

Coronavirus and Me consultation 2021, Children's Commissioner for Wales.

<https://www.childcomwales.org.uk/coronavirus-our-work/coronavirus-and-me-survey-results-2021/>

On the 13th of May 2020, three surveys were launched by the Children's Commissioner for Wales to gain a better understanding of children and young peoples experiences with the Coronavirus pandemic. There were questions regarding play within the surveys.

One survey focused on children aged 7-11, one for 12- 18 year olds and an accessible survey which used symbols for children and young people to enable participation.

Out of 8832 respondents nationally, 718 children and young people from Swansea took part in the 7-11 year old survey. 96% of children answered that they did not have a disability, 1% answered that they did and 3% said they would prefer not to say.

Within the survey, children were asked what they had been doing during lockdown to keep their body and mind healthy, 75% answered 'outdoor activities such as walking, running, cycling etc', 63% selected 'playing people in my home', 57% selected 'playing with toys'.

Children were asked what changes have affected their learning outside school the most. The top 3 answers were:

"Not being able to meet friends or groups" (91%), "Not being able to go outside as much" (63%) and "Parks being closed" (46%).

39% of the group of children selected said they are playing more often since they have needed to stay home because of coronavirus, 31% said they are playing less and 30% said about the same. Children were asked if they would like to comment further about their experiences during this time and 31% mentioned missing friends.

A total of 813 children and young people participated in the 12-18 year olds survey out of 10363 responses across Wales. 96% said they did not have a disability, 2% said they did have a disability and 2% said they would prefer not to say.

Young people were asked which changes have had the most impact on how they feel. 4% said "Not being able to spend time with friends", followed by "Not being able to visit family members" (58%) and "School or college closing" (42%).

Young people were asked how they have been relaxing during covid restrictions. The top answer was "Talking to friends online" (72%). 39% said playing games with members of their household which is 24% lower than the 7-11 year olds survey.

333 children and young people participated nationally, 24 of which were from Swansea. 92% said they did not have a disability, 4% said they did have a disability and 4% answered 'I would prefer not to say'.

Children were asked what they have been doing to keep a healthy body and mind. The top 3 activities selected were:

- Playing (63%)
- Exercising (58%)
- Speaking with friends and family (58%).

Children were asked if they are playing more or less since schools closed on 20th March. 50% of the selected group of children said they are playing more often, 38% said they are playing less and 13% said they are playing about the same.

Based on the results above, it is clear that children and young people were playing more often when schools were shut and in lockdown. The results also demonstrate that children found a lack of social interaction and missing their friends detrimental to their learning and wellbeing.

Insights from Coronavirus Key Findings

- Recognition that there were both negative impacts concerning a loss of play for some, but equally positives of some benefitting from increased play
- Further recognition that play is a key tool for children & young people's resilience post-Covid
- Many children are keen to 'get back to normal'
- Children have missed out on numerous opportunities to socialise and play which needs to be considered within future planning.

Recommended Actions

- Incorporate Covid-related actions within overall plan.

Criteria

This section contains the “matters that need to be taken into account” as set out under section 10 of the Statutory Guidance.

The Criteria column: sets out the data that needs to be available and the extent to which Local Authorities meet the stated criteria.

The RAG status column: provides a drop down box, whereby the Local Authority can show its assessment of whether that criterion is fully met; partially met; or not met. These have been given Red, Amber Green markers, which appear as words in the drop down boxes. *(In the “RAG status column” ,Double click on the word STATUS – this will bring up drop-down form fields options, use the arrow down key until the status required RED, AMBER or GREEN- is at the top then press ok)*

Red, Amber Green (RAG) status is a tool to communicate status quickly and effectively.

Criteria fully met.	Fully met
Criteria partially met.	Partially met
Criteria not met.	Not met

The 2022 column enables the local authority to indicate the direction of travel with the insertion of arrows.

The Evidence to support strengths column: should be used to provide the reason for the chosen criteria status and how the evidence is held.

The Shortfall column: should be used to explain the areas in which the Local Authority does not fully meet the criteria.

The Identified Action for Action Plan column: should be used to show the Local Authority action planning priorities for that Matter.

The Comments section: asks some specific questions for each matter that should enable you to give a clear overview of how the Local Authority complies with the intention and implementation of this matter as set out fully in the Statutory Guidance. It also provides the opportunity to identify challenges and how they might be overcome.

Matter A: Population

The Play Sufficiency Assessment should provide an overview of population and demographic data used locally to plan for play provision.

Information should also be included regarding:

- Ages of children
- First language Welsh speaking children
- Cultural factors (such as other language)
- Gypsy Traveller children
- Disabled children

What has changed in terms of population and demographic trends since Play Sufficiency Assessment 2019?

The latest official estimate of the population of the City and County of Swansea stands at 246,600 (mid-2020 estimates, Office for National Statistics / ONS). Swansea has the second highest population of the 22 Welsh local authorities, representing almost 8% of the total population of Wales (3,169,600). According to this data, the over all population had decreased slightly to 246,600 in 2019-2020 compared to 247,000 in 2018-2019 which shows no significant change.

Changes by age from 2015 to 2020:

Age 0-4: overall decline of around 1,200 (-9.4%), with numbers in this cohort falling in recent years, mainly due to lower birth rates.

Age 5-15: an increase of 1,200 (+4.1%). This increase is concentrated in the 10-14 age group (+900 / +6.8%), in part linked to the small upturn in births from around 2006, with less change in the number of younger children (aged 5-9).

The picture differs for each of the broad age groups: for children (aged 0-15) the net increase between 2008 and 2018 has been relatively minor (+800 or 1.9%)

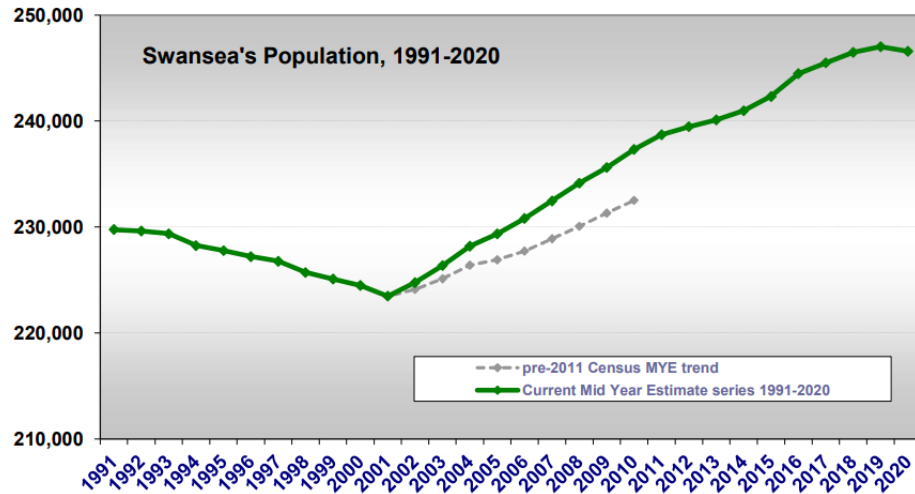
Within Swansea, population estimates by age (2018) show the highest concentration of children (aged 0-15) in the wards of Townhill (27.1%) and Penderry (25.5%); partly due to recent higher birth rates in the areas. Proportions for Penllergaer, Llansamlet, Pontarddulais, Lower Loughor and Gorseinon are also above 20%; possibly reflecting recent housing development and the presence of young families.

In terms of age profile, Swansea currently has a higher proportion (than the Wales and UK average) of young people aged 16-24, in part reflecting the high number of resident students, but slightly lower proportions aged 0-15 and 45-74.

Estimates indicate that around 18,000 people in Swansea (approximately 7% of the total population) were of non-British nationality, and 227,000 (approx. 93%) were of British nationality.

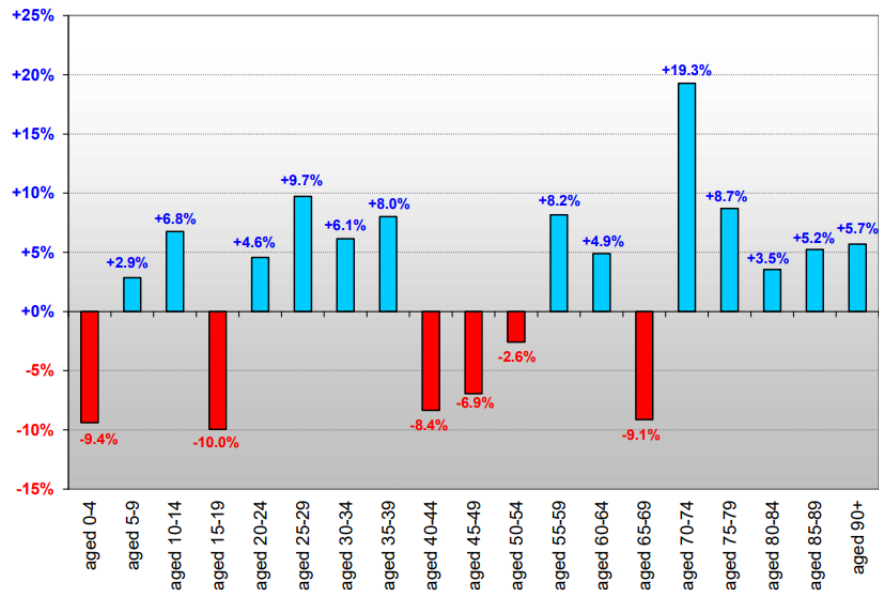
At March 2019, 19.1% of all people registered with learning disabilities in Swansea were aged under 16.

Figure 1: Population Change in Swansea 1991-2020



Source: Mid-Year Estimates 1991-2020, Office for National Statistics (ONS).

Figure 2: Population Change in Swansea by five-year age cohort, 2015-2020



Source: Mid-Year Estimates 2015-2020, Office for National Statistics (ONS).

Source: Mid-Year Estimates 1991-2020, Office for National Statistics (ONS).

Estimated population by ethnic group

The research indicates that in 2016 around 19,000 people in Swansea (approximately 8% of its total population of 245,000) were from a non-white ethnic group. A further 7,000 people were in the category 'All Other White', leading to an estimated 26,000 people (around 11% of the total Swansea population in 2016) being non- 'White British'.

Population by country of birth

The research estimates indicate that around 24,000 people (approximately 10% of Swansea's total population) were non-UK born, and 220,000 (approx. 90%) were born in the UK. In Wales, an estimated 6% of people were non-UK born, whilst across the UK the figure is 14%. No further breakdown of country of birth is available from these figures.

Source: 2017 Research Estimates of Population Characteristics. Swansea Council - Information, Research and GIS

Table A: Estimated population in Swansea, Wales and UK by broad ethnic group, 2016

	Total est. population	White British	All Other White	Mixed	Asian	Black	Other
Swansea	245,000	218,000	7,000	2,000	10,000	2,000	5,000
% of total	100%	89%	3%	1%	4%	1%	2%
Wales	100%	93%	3%	1%	2%	1%	1%
UK	100%	80%	6%	2%	7%	3%	2%

Source: Population Estimates by Characteristics Research Report Supporting Information, ONS © Crown copyright. Published 25 August 2017.

In 2010 Swansea became the second City of Sanctuary in the UK, and the first in Wales. This means that Swansea is committed to building a culture of hospitality and welcome, especially for refugees seeking sanctuary from War and persecution.

Swansea has offered a home to people who have lost their homes and families and we wish to celebrate the welcoming attitudes of Swansea people and organisations.

The City of Sanctuary Management Committee invites all organisations, local groups and individuals to join us and help make Swansea proud to be a place of safety. City of Sanctuary support can include community centres, charities, social clubs, schools, local services and businesses, as well as refugee organisations and volunteers. Supporting organisations promise to welcome and include people seeking sanctuary in their activities.

How has/will the Local Authority use its population data to plan for sufficient play opportunities locally?

Swansea's Research & Information Team provide updated demographic information based on Census data.

The information is used to identify any trends or potential areas of need, with examples being;

- Prevalence of children with disabilities in particular areas to support the location of inclusive play equipment and delivery
- Child & young person population in remote areas such as The Gower and Mawr wards to identify whether support would be beneficial
- Using the population data will allow appropriate planning for play to be carried out in the places with highest concentration of children. This can ensure there is sufficient play opportunities for all children.

Have there been challenges?

The 2021 census data was yet to be fully released at the time of writing this assessment.

How can these be overcome?

It has not been possible for this challenge to be overcome while writing this assessment due to timing of information being available. This was overcome by using 2020 mid year data as the most up to date information available.

Comments

RAG Status for Matter A

Criteria fully met.	X
Criteria partially met.	
Criteria not met.	

DRAFT

Play Sufficiency Assessment Template

Matter B: Providing for Diverse Needs

The Play Sufficiency Assessment should present data about how the Local Authority and partners aim to offer play opportunities that are inclusive and encourage all children to play and meet together.

RAG Status:

Criteria fully met.	
Criteria partially met.	X
Criteria not met.	

LA Ref No	Criteria	RAG Status 2019	RAG Status 2022	Evidence to support strengths	Shortfalls	Identified actions for Action Plan
B11	The play requirements of children living in isolated rural areas are understood and provided for	AMBER	AMBER	<p>It is recognised that these areas take up a large percentage of Swansea geographically, but are populated by significantly small number of people, particularly children and young people.</p> <p>Many of the fixed play areas in the Gower area are owned by community councils. There have been improvements made to these fixed play areas under the Swansea Capital grant and Recovery fund which have allowed fixed play areas to be brought up to standard.</p> <p>The Play Development Officer continues to work with MAWR community council to deliver 3 week summer playschemes,</p>	<p>Covid restrictions significantly impaired the ability to deliver this element of play. The play bus was decommissioned due to the need for significant repairs, however, some provision was delivered through the Play Van to rural areas. There is currently no LA lead play delivery due to Play On Wheels no longer</p>	<p>B11a: While writing this assessment there are discussion being held to develop different strategies to ensure the play requirements of children living in isolated areas are provided for. One possible option is to expand the play sufficiency team and introduce a role to be responsible for working with the third sector to ensure the play requirements of children</p>

Play Sufficiency Assessment Template

LA Ref No	Criteria	RAG Status 2019	RAG Status 2022	Evidence to support strengths	Shortfalls	Identified actions for Action Plan
				<p>which has been vital during the COVID recovery.</p> <p>During the last assessment an action that focused on prioritising play areas within these wards in respect of any upgrades or future rationalisation which has been addressed.</p> <p>Source: Play Development Officer</p> <p>A small Outreach play session was delivered in the summer of 2021 in Pontarddulais with plans for another 2 outreach sessions to take place in the Easter holidays of 2022 in Craigfelen and Sketty.</p> <p>In 2022 all school holidays are having play sessions arranged and in the main summer holidays play sessions and outreach sessions are being planned, while linking in with local councillors. Source: Manager, Early Years, Early Help Hubs.</p>	<p>delivering outreach. Therefore play is currently reduced in these areas at this moment of time.</p>	<p>living in rural areas are understood and met. Source: Sufficiency Assessment Support Officer.</p> <p>Plans to create play and outreach timetables to be passed onto the wider teams such as primary schools, Health Visitors, Flying Start and promoted via social media sites.</p> <p>There are plans in place for all outdoor play sessions in the school holidays will be available to all children and during the summer holiday sessions there will be provision of Open access play opportunities. Source: Manager, Early Years, Early Help Hubs.</p>

Play Sufficiency Assessment Template

LA Ref No	Criteria	RAG Status 2019	RAG Status 2022	Evidence to support strengths	Shortfalls	Identified actions for Action Plan
B12	The play requirements of Welsh language speaking children are understood and provided for	AMBER	AMBER	<p>Whilst Swansea is still seen as a primarily English speaking area, it is clear there is a demand for Welsh play services and the work being carried out by Menter Iaith reflects this.</p> <p>Playschemes Due to the uncertainty that COVID-19 brought, Menter Iaith had to pause their work. Therefore, the summer playschemes that they have run for many years at both Gellionnen and Pontybrenin could not be carried out in the same way they did before. However, they did carry out an alternative <i>Hwyl yr Haf</i> playscheme that ran for 1 week at the beginning of the 2021 summer holidays. This was carried out in collaboration with Menter Iaith Castell-Nedd Port Talbot and the Urdd. The sessions could not offer full capacity as they did prior to COVID but they did manage to have 30 children per session at Bryn Tawe school. There has also been discussion and planning with</p>	<p>The COVID-19 pandemic brought many barriers to the work of Menter Iaith Abertawe and resulted in them having to significantly limit their provision. It was impossible for a long period to enter schools to carry out the usual sessions, and what sessions could run elsewhere had to happen with a drastically reduced capacity.</p> <p>The “Messy Play” sessions which were carried out prior to the</p>	<p>B12a:With support and funding from the Local Authority, the Menter intend to fully re-establish the Welsh language playschemes during 2022.</p> <p>B12b:The Menter will continue to provide Welsh language play opportunities on school sites with their lunchtime clubs and playground games sessions, and will look to build and expand on their new initiative to support the bridging process through play.</p> <p>B12c:The Menter and the Local Authority’s events team will continue to collaborate on events, ensuring that there is Welsh language</p>

Play Sufficiency Assessment Template

LA Ref No	Criteria	RAG Status 2019	RAG Status 2022	Evidence to support strengths	Shortfalls	Identified actions for Action Plan
				<p>PDO to re-start a fuller playscheme programme for 2022.</p> <p>There has also been discussion and planning with PDO to re-start a fuller playscheme programme for 2022.</p> <p>Playground Games Prior to COVID, the Menter regularly offered playground games sessions to local primary schools in support of the <i>Siarter Iaith</i>. Since November 2021, these sessions have been able to restart. In addition to visiting the Welsh medium primary schools, the Menter have also visited one English medium school (Llanrhydian) during this period. The purpose of these sessions is to promote the Welsh language being spoken during play, and to train a small group of pupils (the <i>Dreigiau</i>) to be able to continue to facilitate Welsh language play opportunities in the absence of the Menter's staff. The Menter are currently marketing this opportunity through the <i>Head of the Welsh in Education Officers</i>,</p>	<p>pandemic were paused due to the restrictions, and there are no current plans for them to return due to the Menter's limited resources and the decision to focus on new provision identified as a priority during the <i>Fforwm Iaith</i> discussions.</p>	<p>play provision where appropriate.</p> <p>B12d:Menter Iaith aim to fulfil their commitment in respect of the Winter of Wellbeing funding. They hope to offer interactive theatre sessions during February half term.</p>

Play Sufficiency Assessment Template

LA Ref No	Criteria	RAG Status 2019	RAG Status 2022	Evidence to support strengths	Shortfalls	Identified actions for Action Plan
				<p>and they hope to visit many more schools over the coming months.</p> <p>Lunchtime Games Clubs As of February 2022, the Menter has been able to fully restart their lunchtime games clubs for Key Stage 3 pupils. These take place weekly on the site of Ysgol Gyfun Gŵyr and Ysgol Gyfun Gymraeg Bryn Tawe. These are informal games sessions where pupils can call in to play boardgames and socialise through the medium of Welsh with support from the Menter's staff.</p> <p>Games sessions to support the primary-secondary transition process As of early 2022, the Menter have also established new games sessions as part of an initiative to support the transition process from primary to secondary school. The first games sessions will take place on the site of Ysgol Gyfun Gŵyr and Ysgol Gyfun Gymraeg Bryn Tawe in April 2022. These will take the form of</p>		

Play Sufficiency Assessment Template

LA Ref No	Criteria	RAG Status 2019	RAG Status 2022	Evidence to support strengths	Shortfalls	Identified actions for Action Plan
				<p>informal games sessions like those provided as part of the <i>Hwyl yr Haf</i> scheme, with ball games, parachutes, icebreaker games, and the opportunity to play and socialise through the medium of Welsh. Supporting the bridging process in this manner was recognised as a priority as part of the <i>Fforwm Iaith</i> discussions, with concerns over the continued impact of the pandemic on the continuation of pupils in Welsh medium education.</p> <p>Interactive theatre sessions Due to funding provided by the Local Authority through the Winter of Wellbeing programme, the Menter was able to offer interactive theatre sessions for children and their families in Tŷ Tawe during February half term. These sessions focused on wellbeing and dealing with emotions and were delivered in collaboration with the <i>Arad Goch</i> production company. There are plans for further fun, free, interactive theatre</p>		

Play Sufficiency Assessment Template

LA Ref No	Criteria	RAG Status 2019	RAG Status 2022	Evidence to support strengths	Shortfalls	Identified actions for Action Plan
				<p>sessions in both the Easter holidays and the Whitsun half term.</p> <p>Council events The Menter has also restarted it's work of facilitating Welsh language play opportunities in larger council events. In February 2022, the Menter co-ordinated the Welsh language elements of the <i>Gŵyl Croeso</i> event, including the "Cwtsh Marquee" where soft play and colouring facilities were provided for children and their families to call in and use over the course of the two-day event.</p> <p>Source: Menter Iaith Swansea</p>		
B13	The play requirements of children from different cultural background are understood and provided for	GREEN	AMBER	<p>Swansea continues to be a diverse area. The Summer of Fun and Winter of Wellbeing grants have allowed the Local Authority to engage with a broader range of BAME CYP focused services.</p> <p>The Local Authority continues their established work with BAME groups.</p> <p>The Chinese community within Swansea are now confident to apply for funding</p>	During the last assessment it was mentioned how the capacity to support BAME (Black, Asian, Minority Ethnic) families had reduced. 3 years on there are currently no BAME Family & Play	B13a-It is recognised that it is vital we as a Local Authority are meeting every child's right to play and as mentioned above, this would be a focus of any future planning.

Play Sufficiency Assessment Template

LA Ref No	Criteria	RAG Status 2019	RAG Status 2022	Evidence to support strengths	Shortfalls	Identified actions for Action Plan
				<p>Independently following a number of years of being supported by the Play on Wheels Team the Play on Wheels team supported them to do for many years.</p> <p>Source: Play Development Officer</p>	<p>workstream meetings due to capacity issues experienced.</p> <p>POW/Fam Play /PlayDev have not been engaging with BAME families due to factors such as COVID and the play team moving over to new roles. Fresh Air Families, Play Unravelling and Stepping into Play projects have ceased but there are plans in place for the EHH to work with referred families.</p> <p>During the last assessment it was mentioned that Stepping In To Play Programme and</p>	<p>B13b-The Play Sufficiency team plans to consult with all children including those from different cultural backgrounds to ensure their play needs are being listened to. Source: Sufficiency Assessment Support Officer.</p> <p>B13c: Following the new staffing structure the EYEH team will all need to be trained up to deliver the FAF programme. All EYEH have now done the Forest school introduction training.</p> <p>Talks and meetings to be arranged to discuss providing this service within the EHH hub. Source: Manager, Early Years, Early Help.</p>

Play Sufficiency Assessment Template

LA Ref No	Criteria	RAG Status 2019	RAG Status 2022	Evidence to support strengths	Shortfalls	Identified actions for Action Plan
					<p>upskilled parents of the Chinese Community to receive Level 1 in Play and Child Development. Due to COVID restrictions and the team restructure this type of training has not been carried out in the last couple of years.</p>	
B14	<p>The play requirements and support needs of disabled children are understood and provided for.</p>	AMBER	AMBER	<p>As stated in previous assessments, Swansea has a history of ensuring every child is given the correct opportunities to play, including those with a disability. Swansea's Key Considerations (please see appendices) for new play areas has been published by Play Wales and is therefore available nationally to support good practice. The current Swansea Council Capital Fund has ensured the key considerations are embedded in all specifications that goes out to potential contractors There has also been an increasing level of awareness in terms of inclusivity and accessibility as it is being spoken about</p>	<p>While writing this assessment there are no WePlay sessions being carried out. However, there is a possibility this could be reviewed by the EHH to reintroduce this method of play.</p> <p>A side issue that has been picked up by Play Development</p>	<p>B14a: To continue to help ensure that every child is given correct opportunities by the Play Sufficiency team consulting with children to listen to their views on play opportunities.</p> <p>B14b: To continue to ensure there is an increase of awareness of inclusivity and accessibility.</p>

Play Sufficiency Assessment Template

LA Ref No	Criteria	RAG Status 2019	RAG Status 2022	Evidence to support strengths	Shortfalls	Identified actions for Action Plan
				<p>and understood far more. Inclusivity and accessibility is being considered by the wider play workforce compared to previous assessments.</p> <p>Work has been carried out to assess play areas to ensure they are accessible for as many children as practicable. While carrying out these assessments the Play Development Officer has listened to the voices of parent/carers to ensure new equipment is supporting their child's needs wherever possible. This has historically helped with designs going forward and helped inform the wider team. It has helped us set a strong baseline of what is expected for new full play area refurbishments.</p> <p>To complement the wheelchair swing at Victoria Park, the whole play area has now been refurbished to make it a more accessible, enjoyable and inclusive for children. Paying particular attention to those who use wheeled mobility aids. Sign Language boards have also been included in this project. This refurbishment was carried out through the PSA fund.</p>	<p>Officer is the availability of appropriate toilet and changing facilities across the county – especially as we improve inclusivity in play areas. This is currently being discussed and explored with the Officer leading on Toilet Strategy and parent/carer representative.</p>	<p>B14c: Different departments have worked collaboratively over the years and this is something that needs to continue to create more play opportunities for children e.g. communication boards and accessible play areas. Source: Sufficiency Assessment Support Officer.</p> <p>Outdoor play sessions for ALN will be available in all school holidays. EYEH are also planning an ALN group for all EHH hubs. Source: Manager, Early Years, Early Help.</p>

Play Sufficiency Assessment Template

LA Ref No	Criteria	RAG Status 2019	RAG Status 2022	Evidence to support strengths	Shortfalls	Identified actions for Action Plan
				<p>In partnership with the local Health Board – Communication Boards are being produced to be placed at every play area in the county.</p> <p>Source: Play Development Officer</p> <p>ALN provision is being provided in the school holidays by the Early Years EHH team. During Summer 2021 there were 3 ALN play sessions carried out. A session was also carried out at the beach during the Easter holidays 2022.</p> <p>1-2-1 support is also being provided for families , this is a referral based session and include Fresh Air Families. Joint support with the EHH lead workers.</p> <p>Source: Manage, Early Years, Early Help.</p>		
B15	Play projects and providers have access to a range of resources which support inclusion	GREEN	GREEN	Community play projects supported by the local authority have access to a range of training opportunities via the Early Years Training Bulletin. Notably, this traditionally includes Disability Awareness a bespoke course aimed at ensuring play opportunities are inclusive of all.		

Play Sufficiency Assessment Template

LA Ref No	Criteria	RAG Status 2019	RAG Status 2022	Evidence to support strengths	Shortfalls	Identified actions for Action Plan
				<p>The Play & Leisure Opportunities Library (PLOL) offers a lending service with equipment intended to support inclusion.</p> <p>Source: Childcare & Play Sufficiency Manager</p>		
B16	There is a well known and agreed mechanism which is used to identify the need for separate provision for disabled children	AMBER	AMBER	<p>Play provision for disabled children continues to be based upon the principal that every child should be able to access their chosen provision.</p> <p>Equally, there is a recognition that specialist play opportunities have a role in ensuring those who require more dedicated support are able to access it. Such provision includes the Ysgol Crug Glas holiday Playscheme.</p> <p>Source: Childcare & Play Sufficiency Manager</p>		B16a: Play Sufficiency Team to develop a statement on access to play.
B17	Access audits for all play provision as described in the guidance are undertaken	GREEN	GREEN	Many parks and play areas have an access audit which is currently being updated with the role out of the Swansea Council Capital and Recovery Grants investment in play areas.	Officer time and capacity to fully complete.	
B18	Designated play space is provided and well maintained on gypsy traveller sites	GREEN	RED	Due to a number of factors such as the re-focussing of the Play Delivery Team and COVID it has not been possible to	Since Covid and the re-structure of the play delivery team, there has	B18a: There are plans in place to use future Capital funding to ensure that all or if not

Play Sufficiency Assessment Template

LA Ref No	Criteria	RAG Status 2019	RAG Status 2022	Evidence to support strengths	Shortfalls	Identified actions for Action Plan
				<p>access certain traveller sites over the last 2 years.</p> <p>We do know that the play areas are at end of life. However, there are plans in place to upgrade these play spaces within the Swansea Council Economic Recovery Fund.</p> <p>Play Development Officer is in contact with Early Help Hub Lead for Traveller engagement to ensure updates and consultation opportunities</p> <p>Source: Play Development Officer</p>	<p>been a lack of contact and communication onsite.</p> <p>None of the families have accessed any play at all since before lockdown. in the past the play on wheels team would have regularly visited both the official Pantyblawdd caravan site and also the tolerated Mill stream way site. This support was essential and very welcome by both parents and children. Due to cultural and position of sites often the workers were the only other adults that many</p>	<p>almost all play areas in Swansea are up to standard and accessible for all children. There is a great amount of consideration currently being paid to our play areas.</p> <p>Discussions need to be held to arrange a meeting to discuss what support plan the EYEH team can offer for the travellers community. Source: Manager, Early Years, Early Help.</p>

Play Sufficiency Assessment Template

LA Ref No	Criteria	RAG Status 2019	RAG Status 2022	Evidence to support strengths	Shortfalls	Identified actions for Action Plan
					<p>children would ever see and have contact with other than their own immediate and extended family. The play workers would have built up relationships and trust with both the families and the children themselves, this trust and relationships would enable the children to be with them unaccompanied. This in turn would be essential in preparing the children almost a stepping-stone to start nursery and school as often the children would never have spent any time away from their families</p>	

Play Sufficiency Assessment Template

LA Ref No	Criteria	RAG Status 2019	RAG Status 2022	Evidence to support strengths	Shortfalls	Identified actions for Action Plan
					<p>and certainly not anytime with anyone not none to their community. This makes the transition to school so much easier and less traumatic for both children and parents.</p> <p>Source: Early Help Lead Worker (Traveller) Child and Family.</p> <p>Covid restrictions has impacted delivery of services, also there have been no conversations regarding these play sessions – the Play van can be offered to provide support to the traveller community and the</p>	

Play Sufficiency Assessment Template

LA Ref No	Criteria	RAG Status 2019	RAG Status 2022	Evidence to support strengths	Shortfalls	Identified actions for Action Plan
					newly formed Early years, Early Help team can offer support. Source: Manager, Early Years, Early Help.	
B19	The requirements of young carers are understood and provided for	AMBER	AMBER	<p>In addition to the work of the LA in supporting young carers/Young Adult Carers, Swansea Ymca, young Carers service (aged 8-18) and Swansea Carers centre, Young Adult Carers project (aged 16-25) undertakes extensive consultation with young/young adult carers and highlighted a range of consistently experienced issues. Most notably for the PSA:</p> <ul style="list-style-type: none"> - sibling carers can feel resentful towards the child with needs due to the amount of time parents need to spend with them. - they feel they have little or no quality time as a family - Family decisions are centred around the child/person with care needs E.g. where to go on a family day out or are 	<p>Whilst there is a clear means for ensuring young carers/young adult carers are listened to, it appears their play needs may not be fully met and there is an opportunity for some focussed work. Still the case</p> <p>Lack of opportunity to get a break or space away from those they care for.</p>	<p>B19a:Play Sufficiency team to work collaboratively with the staff and Young People of Swansea's Young Carers Centre to ensure opinions and thoughts are heard to create better play opportunities.</p> <p>B19b:Investigate joint working between the Young Carers Service, Young Adult Carers project and the play sector</p> <p>B19c:Establish specific work with YMCA young Carers 8-18 and</p>

Play Sufficiency Assessment Template

LA Ref No	Criteria	RAG Status 2019	RAG Status 2022	Evidence to support strengths	Shortfalls	Identified actions for Action Plan
				<p>cancelled at short notice due to appointments or the health of the cared for person</p> <ul style="list-style-type: none"> - In lone parent families (or if one parent works) Children/ siblings carers often 'act up' in a parental role - Bullying is an issue - Family relationships are at high risk-family breakdown - Emotional health and wellbeing most likely will be effected - Opportunities to socialise or access out-of-school or community activities can be difficult - isolation and loneliness associated with their caring role resulting in a lack of engagement with community including play related activities -Covid has made the young carers/ Young Adult carers more isolated making it difficult to get some out the house to engage due to the severity of mental health -lack of opportunity to be young, unless accessing a Young Carers/ Young Adult 	<p>Lack of secure and constant funding to support needs. Young Carers need a dedicated person to encourage and support over a long period of time not short term fixes</p> <p>Currently, there is no play practitioner working with colleagues to support their work with LAC children.</p> <p>Due to Covid restrictions this has impacted delivery of services – no discussions have been carried out to look at what</p>	<p>Swansea Carers Centre Young Adult Carers to provide bespoke tailored play and leisure opportunities Source: Sufficiency Assessment Support Officer.</p> <p>B19d:To arrange a meeting and look at what service can be provided by the EYEH team for the LAC children. Source: Manager, Early Years, Early Help.</p>

Play Sufficiency Assessment Template

LA Ref No	Criteria	RAG Status 2019	RAG Status 2022	Evidence to support strengths	Shortfalls	Identified actions for Action Plan
				Carers provision all play activities revolved around cared for (especially if a sibling is the cared for) Source: Young Adult Carers Project Coordinator, Swansea Carer's Centre	support the EYEH team can offer. Source: Manager, Early Years, Early Help.	
B20	The requirements of lesbian, gay or bisexual (LGB) children are understood and provided for	GREEN	AMBER	Play Development and Sufficiency Assessment Support Officer recently engaged with the Good Vibes (LGBTQ+) Youth Club which is held at the YMCA Swansea and ongoing consultative work will be carried out and outcomes acted upon. Source: Play Development Officer/ Sufficiency Assessment Support Officer.	The COVID pandemic restricted the LA from engaging with this group for 2 years. Source: Play Development Officer	B20a: Play Development Officer and Sufficiency Assessment Support Officer to re-engage with the LGBT+ community.

Providing for Diverse Needs

How has data been used (or how will the data be used) to address the barriers that children with diverse needs face in accessing inclusive and accessible opportunities for playing?

There is an established process via the Play Network Sub-groups and links to representative groups such as Swansea Parent/Carer Forum to ensure that barriers to play are identified and corrective measures considered.

Data and findings are additionally factored into any decision-making in terms of grant funding processes and panel recommendations to ensure that available funding most effectively meets need. It is beneficial that the lead on play sufficiency is a stakeholder in most grant processes for children & young people and can ensure criteria responds to need.

Additionally, engagement with organisations that support vulnerable families has allowed for the identification of a potential 'missed area' both within local assessment and potentially the template itself. Swansea Women's Aid provides an invaluable support service for families affected by domestic abuse. Significant to this is the Play & Activities Project which provides group and 1:1 support with a recognition of the importance of play in wellbeing and resilience. Often these families have relocated as well as the other impact of their experiences. It is likely that their ability to get out to play will have been impacted significantly and probably at a time when they most need to experience play for all the benefits it gives them. Engagement with their Community Services Manager has identified potential to offer grant support, training and to ensure their work is rightly included with Swansea's PSA.

Have there been challenges?

The main challenges have related to either the loss or temporary stopping of play delivery. Whilst the Covid pandemic has affected everyone, it inevitably had a greater impact on those vulnerable children & young people who may be more susceptible to illness. Much dedicated provision was closed due to increased risk from infection of those who would attend. Additionally, many children who attend specialist provision have to travel further to access it and restrictions on travel also had an impact.

Additionally, capacity issues have reduced opportunities for engagement. This has traditionally been an area of strength through engagement with representative groups to identify need, but this has reduced in recent years.

How can these be overcome?

Re-establishment of links with key representative groups, ideally through the 're-building' of a play sufficiency team. This would include a community play role to support groups, as well as additional capacity for sufficiency support to identify and respond to gaps.

Comments:

Additional funding made available by Welsh Government has addressed some of the impact felt by vulnerable and need groups.

Below is a comparison to show the difference between the 2019 assessment and 2022.

2019: 5 Green, 5 Amber, 0 Red

2022: 2 Green, 7 Amber, 1 Red

Matter C: Space available for children to play: Open Spaces and Outdoor unstaffed designated play spaces

The Local Authority should recognise that all open spaces within their area are potentially important areas where children can play or pass through to reach other play areas or places where they go.

RAG Status

Criteria fully met.	X
Criteria partially met.	
Criteria not met.	

Open Spaces

LA Ref No	Criteria	RAG Status 2019	RAG Status 2022	Evidence to support strengths	Shortfalls	Identified actions for Action Plan
C22	The Local Authority has undertaken an Open Space Assessment (OSA) that maps areas that are used, or might be used for playing as listed in the Statutory Guidance	GREEN	GREEN	<p>Planning Services undertook an extensive Open Space Assessment and work that Play and The Play Spaces Group (facilitated by Play) has had significant input throughout.</p> <p>Each ward within the authority has a specific play ward map detailing green space and formal play areas. Source: Senior Planning Officer</p>		

Play Sufficiency Assessment Template

LA Ref No	Criteria	RAG Status 2019	RAG Status 2022	Evidence to support strengths	Shortfalls	Identified actions for Action Plan
C23	The Local Authority has undertaken an Accessible Greenspace Study that maps areas that are used for playing	GREEN	GREEN	<p>The LA has undertaken an extensive GIS based Open Space mapping assessment.</p> <p>Outputs from the OSA directly inform the LDP process by identifying specific surpluses or deficiencies within communities. In areas of limited open space, it is important that the creation of new provision is encouraged and that existing spaces are retained and improved where possible. Valuable existing facilities should be protected whilst the provision of new and improved open spaces should be facilitated.</p> <p>Source: Senior Planning Officer</p>		
C24	The Local Authority undertakes access audits at all open spaces and implements proposals to improve access and safety	GREEN	GREEN	<p>The LA has undertaken access audits at each of its parks and formal open spaces. The results of these assessments are placed on the LA website to advise users of the most accessible access points.</p> <p>The LA work with SAFE and the Play Access Group in relation to access issues.</p> <p>Source: Senior Planning and Spatial Data Officer / Play Spaces Group</p>		

Play Sufficiency Assessment Template

LA Ref No	Criteria	RAG Status 2019	RAG Status 2022	Evidence to support strengths	Shortfalls	Identified actions for Action Plan
C25	The Local Authority has developed its own Open Space Standards in accordance with the advice and requirements of Planning Policy Wales	GREEN	GREEN	<p>Swansea's Open Space Strategy has been largely developed during the period from 2016 to 2019. Led by Cabinet, this has involved collaboration between officers in Planning, Play, Cultural Services and Environment.</p> <p>The Strategy includes a standard based on the Fields in Trust standards. Source: Senior Planning Officer</p>		
C26	The Local Authority undertakes and actions play value assessments in public open space	AMBER	AMBER	<p>The RAG (Red, Amber, Green) assessments completed for fixed play areas traditionally has a focus on compliance and longevity. With the recent capital investments in Play Spaces a parallel RAG has been created to assess inclusivity, accessibility and play value. This is to inform investment in a collaborative and holistic way...responsive to the need and expectations of children, young people and their families</p> <p>Source: Play Development Officer</p>	<p>There is no play value assessment for public open space other than fixed play areas</p> <p>Source: Play Development Officer</p>	
C27	Brownfield sites owned by the Local Authority are assessed for the potential for the site to be reclaimed to provide for	AMBER	AMBER	From 2018 the LA identify all areas of FIT deficiency that are council owned and then identify Brownfield sites within them.		

Play Sufficiency Assessment Template

LA Ref No	Criteria	RAG Status 2019	RAG Status 2022	Evidence to support strengths	Shortfalls	Identified actions for Action Plan
	children's play			<p>There are only two sites within FiT deficient areas. The first in Penllergaer and the second a public space in the SA1 area but neither were considered suitable for development.</p> <p>Source: Senior Planning Officer</p>		

DRAFT

Outdoor Unstaffed Designated Play Spaces

LA Ref No	Criteria	RAG Status 2019	RAG Status 2022	Evidence to support strengths	Shortfalls	Identified actions for Action Plan
C28	The Local Authority keeps an up to date record of all designated play space as described in the Statutory Guidance	GREEN	GREEN	<p>Parks Officers use the PSS Live database to record all designated play space in the LA and what equipment, if any, is in each play space. The database also includes the condition and quality of each item, faults identified and rectified and record of all inspections.</p> <p>Source:Speciality Parks Manager/Play Development Officer</p>		
C29	The Local Authority assesses play spaces for play value and potential to increase in play use as set out in the Statutory Guidance	AMBER	GREEN	Currently, the Play Development Officer is working alongside the parks department to carry out light touch/desk top assessments and 54 site visits to assess the play value and inclusivity, following the current significant investments in		C29a: Continue cross directorate partnership work to assess and improve play areas with robust programme and investment.

Play Sufficiency Assessment Template

LA Ref No	Criteria	RAG Status 2019	RAG Status 2022	Evidence to support strengths	Shortfalls	Identified actions for Action Plan
				<p>play areas across the authority. Historically the RAG assessments were weighted around maintenance and safety of a site. There has been a significant shift of understanding around play value and it's importance with senior officers and representatives.</p> <p>Source: Play Development Officer</p>		
C30	The Local Authority undertakes access audits at all designated play spaces and implements proposals to improve access and safety	GREEN	GREEN	<p>With the recent and on-going play area upgrades and refurbishments we are going to re-visit the current access audits and update the website and provide even more information about accessibility and suitability so the public are able to make informed choices of where to go.</p> <p>Source: Play Development Officer</p>		

Play Sufficiency Assessment Template

LA Ref No	Criteria	RAG Status 2019	RAG Status 2022	Evidence to support strengths	Shortfalls	Identified actions for Action Plan
C31	The Local Authority has developed and agreed a new fixed play provision standard	GREEN	GREEN	<p>An additional RAG grading has been used to assess all LA play areas was developed during 2021 to take in;</p> <ul style="list-style-type: none"> - Play Value - Accessibility of the play area - Inclusivity of equipment <p>This is alongside the Longevity / lifespan of equipment historical RAG</p> <p>So, whilst the 2019 assessment was green, it should be noted that this has been further built upon and improved for 2022. Source: Play Development Officer</p>		
C32	The Local Authority undertakes and actions play space assessments in designated play spaces	GREEN	GREEN	Both RAG assessments are being used significantly with regards to the new Council Capital Investment, Recovery Fund Investment and PSA Capital Investment. The in		

Play Sufficiency Assessment Template

LA Ref No	Criteria	RAG Status 2019	RAG Status 2022	Evidence to support strengths	Shortfalls	Identified actions for Action Plan
				<p>situ Project Manager has been pivotal to this. However, this role will end March 2022. The responsibility of managing, refurbishment play space programme will sit with Parks and Cleansing and the collaborative work with Play Sufficiency will continue.</p> <p>Source – Play Development Officer</p>		

Play Sufficiency Assessment Template

C33	<p>The Local Authority has introduced smoke-free playgrounds</p> <p>The local authority complies with The Smoke-free Premises and Vehicles (Wales) Regulations 2020 that requires playgrounds in Wales to be smoke-free.</p>	GREEN	GREEN	<p>All play areas are designated Smoke Free and carry signage to inform the public.</p> <p>There is information on the LA website that encourages people not to smoke in play areas. https://archive.swansea.gov.uk/smokefreespaces</p> <p>Source - Play Development Officer</p>		
C34	<p>The Local Authority has removed 'no ball games' signs to encourage more children playing in the community</p>	AMBER	AMBER	<p>Whilst Housing are still reviewing the 'no ball games' signs as appropriate, they have not yet all been removed.</p> <p>Housing do however recognise the right children to have safe places to play and this has been included as an objective in the revised Housing Estate Management Strategy.</p> <p>Housing also are keen to engage with children and young people locally in respect of environmental improvements in their local areas and this is included in the strategy also.</p> <p>Source: Housing Operations Manager</p>	<p>Housing are still reviewing the signage regarding ball games and therefore, this is not something has changed since 2019.</p>	<p>C34a:Further work to be carried out to ensure signage is reviewed to allow better play opportunities.</p> <p>C34b:Play Sufficiency Team and partners to engage with children and young people regarding environmental improvements in their local areas and feedback to Housing Department.</p>

Play Sufficiency Assessment Template

C35	The Local Authority has erected signs, such as Play Priority Signs to encourage more children playing in the community	AMBER	GREEN	The Local Authority have worked collaboratively with the Local Health Board to produce 100 Communication Boards that have pictures and words to encourage play within parks and play areas. Source: Play Development Officer		
C36	The Local Authority includes a recognition of the importance of playing fields to children's play when any disposal decisions are made	GREEN	GREEN	Whilst there have been a limited number of occasions when the CPSM has been engaged ahead of playing field disposals in the period from 2019 to 2022, this was largely due to how few disposals took place. The key point is that there is a recognised system in place among colleagues in both planning and education to ensure that the CPSM is involved in the process. Source: Childcare & Play Sufficiency Manager		
C37	The Local Authority includes children and their families in any consultations regarding decisions to dispose of playing fields	GREEN	GREEN	There is a recognised process whereby those administering potential disposal of playing fields are required to engage Play Sufficiency staff. Source: Childcare & Play Sufficiency Manager		
C38	The Local Authority refers to guidance around creating accessible play space when refurbishing or developing new	GREEN	GREEN	The key considerations document that was developed in partnership with both our Play Access and Play Spaces groups continues to be incorporated into any new developments or equipment upgrades.		

	playgrounds			<p>Furthermore, the key considerations document is now used as a good practice document notably in Play Wales' Creating Accessible Play Spaces.</p> <p>Source: Childcare & Play Sufficiency Manager</p>		
--	-------------	--	--	---	--	--

Open Spaces

How has the Local Authority ensured collaboration between Open Space Assessments / Green Infrastructure Strategies and Play Sufficiency Assessments to improve spaces for play?

The Play Space sub-group of Swansea's Play Network has been consistently the most impactful of the network and collaborative approaches for play over the past 3 years. Primarily, an internal group for roles impacting upon play spaces, the group has maintained a dialogue on both operational issues and the strategic coordination of policy including Open Space Assessment / GI Strategy and their contribution to play sufficiency.

Have there been challenges?

The closure of play spaces had an impact during the Covid pandemic, however, this was countered by the commitment to developing play spaces.

How can these be overcome?

Comments:

Despite significant improvement and enhancement of play spaces in recent years, some play areas are not at the desired 'green' level. It is intended to pursue additional grant funding opportunities to look to get as many as possible to the desired level.

Outdoor unstaffed designated play spaces

How has the local authority considered all issues of accessibility in play space development?

The most significant development to support accessibility continues to be the use of the 'key considerations' document as guidance on both the enhancement of existing play spaces and the introduction of new spaces.

Have there been challenges?

The main challenge has been that most play areas preceded the Disability Discrimination Act and many were developed with grassmat or woodchip surfacing and with equipment that wasn't truly accessible.

How can these be overcome?

This has been countered with the recognition that upgrades to play areas must prioritise inclusive equipment and, as stated, all new sites must meet the key considerations requirements.

Additionally, the capital funding provided by Welsh Government to support play sufficiency and the local investment in play has allowed for the replacement of inaccessible safety surfacing.

Comments

The development of and enhancement to play spaces stands out as the main success for play between 2019 and 2022.

Whilst much of this will be attributed to the commitment to fund play areas, the impact of the coordinated approach to planning and delivery cannot be underestimated. The highly effective joint working across teams and directorates has been recognised as key to making this work. There is a strong case for saying that the coordination of the Play Spaces Group by the Play Development Officer is the most significant element of this.

Below is a comparison of the RAG status numbers from 2019 to 2022- it shows a significant amount of works has been done within outdoor unstaffed play spaces with matters either remaining Green or moving up from an Amber to a Green.

2019- 12 Green, 5 Amber, 0 Red.

2022- 14 Green, 3 Amber, 0 Red.

Matter D: Supervised provision

The Local Authority should aim to offer a range of supervised play provision.

RAG Status

Criteria fully met.	
Criteria partially met.	X
Criteria not met.	

Playwork provision

LA Ref No	Criteria	RAG Status 2019	RAG Status 2022	Evidence to support strengths	Shortfalls	Identified actions for Action Plan
D38	The Local Authority keeps an up to date record of all supervised playwork provision as described in the Statutory Guidance	GREEN	AMBER	The local authority maintains a relationship with all those offering staffed play provision. Source: Childcare & Play Sufficiency Manager	There has been a significant reduction in the level of playwork provision in recent years. Most notable is the disappearance of practically all play specific community projects within Swansea with most delivery via organisations with a wider remit, e.g.	D38a:Additional capacity to develop new community play provision and support existing provision must be sought.

Play Sufficiency Assessment Template

LA Ref No	Criteria	RAG Status 2019	RAG Status 2022	Evidence to support strengths	Shortfalls	Identified actions for Action Plan
					Swansea Community Farm, SNPT Forest School and the Family Centres managed by Faith in Families.	
D39	The Local Authority offers playwork provision which offers a rich play environment as described in the Statutory Guidance	GREEN	AMBER	<p>Due to the reconfiguration, the way play is delivered has changed since the last assessment.</p> <p>The Early Help Hubs oversee play opportunities within the area and are responsible for ensuring that it provides a rich, varied and accessible play environment.</p> <p>There are plans in place to offer open access play for children and young people during the summer holidays. This provision will not be held at the Early Help Hubs but will be run by Early Help Hub staff, some of which</p>	<p>The Play on Wheels (Playbus) is no longer running due to a number of factors resulting in no outreach work taking place currently.</p> <p>Resctructure has resulted in less play delivery and less playworkers as their roles within the LA have changed.</p>	<p>D39a:With no outreach wok currently taking place, there is an opportunity to explore different options as to how different teams can work together to ensure outreach work takes place in the near future. It is a chance to increase and create play opportunities for all children across Swansea.</p> <p>D39b: Explore partnership peripatetic play delivery with sport and health.</p>

Play Sufficiency Assessment Template

LA Ref No	Criteria	RAG Status 2019	RAG Status 2022	Evidence to support strengths	Shortfalls	Identified actions for Action Plan
				<p>were previously part of the play team.</p> <p>There are plans in place to provide a play offer for those that have a referral to the Early Help Hubs. There are plans to re-introduce Fresh Air Families from April 2022 which will encourage families to take part in play in the outdoors.</p> <p>Source: Early Help Hub Manager</p>		
D40	The Local Authority ensures that partners offering playwork provision are supported to offer rich play environments as described in the Statutory Guidance	AMBER	AMBER	Due to the COVID pandemic and capacity issues, the Play Development Officer has not been able to carry out as much training as originally planned. However, certain onsite training has been delivered to Flying Start staff such as Loose Parts training.	COVID and capacity issues has resulted in less training being delivered compared to previous years.	D40a: Play Sufficiency Team to re-establish training opportunities to further support partners that offer playwork provision.

Play Sufficiency Assessment Template

LA Ref No	Criteria	RAG Status 2019	RAG Status 2022	Evidence to support strengths	Shortfalls	Identified actions for Action Plan
				<p>Play training has been facilitated wherever possible (COVID allowing).</p> <p>At the time of writing 20/1 /22 training sessions are in the planning for colleagues in Sport and Health. There is also potential follow up play training for two schools who have benefited from previous loose parts sessions delivered by colleagues.</p> <p>Two play training sessions are planned in the Spring FIS training brochure.</p> <p>Source: Play Development Officer</p>		
D41	Staffed playwork provision that the Local Authority provides meets the regulatory requirements and National Minimum Standards	AMBER	AMBER	As mentioned in 2019 the Local Authority's play provision is not regulated by CIW. The play provision does however comply with the National Minimum Standards by ensuring aspects such as	Staffed playwork would now be delivered from the Early Help Hubs to work with families with a referral.	D41a: This is an opportunity for the Play Sufficiency Team to work collaboratively with the EHH to create positive play opportunities. Source: Play Development Officer

Play Sufficiency Assessment Template

LA Ref No	Criteria	RAG Status 2019	RAG Status 2022	Evidence to support strengths	Shortfalls	Identified actions for Action Plan
				<p>qualifications are reaching standards.</p> <p>Source: Childcare & Play Sufficiency Manager</p>	<p>Source: Play Development Officer</p>	
D42	Staffed playwork provision that the Local Authority funds meets the regulatory requirements and National Minimum Standards	AMBER	AMBER	<p>Due to the seasonal or transient nature of much play provision, it is not a requirement to be CIW registered but this is encouraged as good practice and projects are advised on NMS and compliance.</p> <p>Source: Childcare & Play Sufficiency Manager</p>	<p>It is inevitable that with much provision operating on a seasonal or part-time basis that projects cannot commit to CIW registrations.</p>	
D43	Staffed playwork provision that the Local Authority's partners provide meets the regulatory requirements and National Minimum Standards	AMBER	AMBER	<p>At the current time, few projects delivered by the LA's partners are registered, although all are subject to the quality assurance the LA provides. This quality assurance was developed to reflect the National Minimum Standards so as to check that unregistered provision was meeting requirements.</p>	<p>Traditionally, play projects in Swansea have operated outside of CIW registration requirements. This is generally considered due to finding requirements of registration hard to comply with due</p>	<p>D43a: Play Sufficiency Team to work with Clybiau Plant Cymru and other partners to promote the benefits of registering with CIW to leaders of playwork provision across Swansea.</p>

Play Sufficiency Assessment Template

LA Ref No	Criteria	RAG Status 2019	RAG Status 2022	Evidence to support strengths	Shortfalls	Identified actions for Action Plan
				<p>The Ysgol Crug Glas Summer Playscheme for children with profound special needs, delivered by Interplay, is registered with the CIW.</p> <p>Source: Childcare & Play Sufficiency Manager</p>	to the seasonal nature of their work.	
D44	Staffed playwork provision across the Local Authority works to a recognised quality assurance programme	AMBER	AMBER	<p>Play Development Officer has been undertaking the Quality Assurance process.</p> <p>Play Development Officer continues quality assuring funded play projects.</p> <p>Source: Play Development Officer</p>	As mentioned in 2019 capacity to quality assure is an issue. This issue is still ongoing due to the reconfiguration of the team resulting in less people to QA.	D44a: Play Sufficiency team and partners to look at ways to increase capacity.
D45	The Local Authority prioritises quality issues when engaging with/ commissioning the private sector to deliver recreational activities for children.	GREEN	GREEN	<p>Whilst the majority of play provision is delivered by either public or voluntary sector organisations, wider recreation opportunities see greater engagement with the private sector.</p> <p>Notably, the Summer of Fun and Winter of Wellbeing</p>		

Play Sufficiency Assessment Template

LA Ref No	Criteria	RAG Status 2019	RAG Status 2022	Evidence to support strengths	Shortfalls	Identified actions for Action Plan
				<p>provided wider engagement with providers including those within the private sector.</p> <p>They were able to submit applications to demonstrate why they are able to meet the requirements of the funding criteria.</p> <p>Source: Childcare & Play Sufficiency Manager</p>		

DRAFT

Play Sufficiency Assessment Template

D46	The Local Authority provides council premises and space free of charge to organisations which provide free (at the point of access) playwork provision for children	AMBER	AMBER	Traditionally, grant funding for community play projects has been intended to ensure that costs associated with delivery are not passed on to the service user. This has generally included use of community centres and, additionally, engagement with community centre management committees has encouraged reduced charges for play projects. Source: Childcare & Play Sufficiency Manager	Community play projects that access community centres, and similar, are still charged, even when their services come without charge. Additionally, there have been examples where community buildings' management committees have prioritised external bookings over play projects with an established relationship which jeopardised delivery.	
-----	---	-------	-------	---	--	--

Structured recreational activities for children

LA Ref No	Criteria	RAG Status 2019	RAG Status 2022	Evidence to support strengths	Shortfalls	Identified actions for Action Plan
D47/48/49	Local authority sport, physical activity, and active recreation plans are contributing to increasing free play and recreational activities	GREEN	GREEN	<p>The operational Strategy of the Sport and Health Service, “Creating an Active Swansea” has been developed in 2021 and reflects both local and national key influences and recent changes in ways as result of the pandemic. The delivery of this plan is the key operational responsibility of Swansea Council’s Sport and Health Service and includes strategic aims which will contribute to increasing free play and developing recreational activities through the medium of sport, physical literacy and recreational physical activity.</p> <p>Sport, Physical activity and active recreation contribute significantly to a cross-</p>		

Play Sufficiency Assessment Template

LA Ref No	Criteria	RAG Status 2019	RAG Status 2022	Evidence to support strengths	Shortfalls	Identified actions for Action Plan
				<p>section of Well-being goals defined in the Well-being of Future Generations Act, Swansea Councils sustainable development corporate plan and in the Local Well-being plan.</p> <p>Swansea council provide and/or facilitate a range of recreational activities through the Sport and Health team and community centres, as well as sports pitch provision through to parks.</p> <p>The local authority continues to receive funding from Sport Wales which is ring fenced for providing recreational activities for both universal provision for young people and targeted projects for under-represented groups.</p> <p>Source: Health and Well-being Manager</p>		

Play Sufficiency Assessment Template

LA Ref No	Criteria	RAG Status 2019	RAG Status 2022	Evidence to support strengths	Shortfalls	Identified actions for Action Plan
D50	The sports agenda contributes to the provision of sufficient recreational activities for children	GREEN	GREEN	<p>In addition to Creating an Active Swansea, Swansea Council's Sport and Health team and their partners develop activities to increase levels of sport and physical activity participation in all sectors of the community. This involves direct delivery of activity as well as capacity building within local clubs, communities and facilities to maximise participation.</p> <p>Sport and Health have developed programmes accordingly in recent months to reflect national guidelines as a result of the covid-19 pandemic.</p> <p>Sport and health aim is to widen participation in sport and all programmes delivered are targeted at increasing physical activity based on chief medical officer guidelines. A key</p>		

Play Sufficiency Assessment Template

LA Ref No	Criteria	RAG Status 2019	RAG Status 2022	Evidence to support strengths	Shortfalls	Identified actions for Action Plan
				<p>focus of Sport and Health delivery lies around the development of Physical Literacy in young people working with key partners across the authority to achieve this. Programmes such as ParkLives encourage unstructured openly accessible recreational activities in the outdoors to encourage physical activity and connection with the natural environment.</p> <p>Additional funding opportunities have enabled Sport and Health to enhance provision for targeted groups; for example Us Girls, Sport Diversity Cymru, Disability Sport.</p> <p>Consultation and Partnership working across the local authority and wider has helped to</p>		

Play Sufficiency Assessment Template

LA Ref No	Criteria	RAG Status 2019	RAG Status 2022	Evidence to support strengths	Shortfalls	Identified actions for Action Plan
				<p>develop the provision of sport and physical activity so that it meets the needs of the community.</p> <p>From 2020 sport and health have supported the development of sport provisions as clubs and organisations recover through funding and advise.</p> <p>Source: Health and Well-being Manager</p>		
D51	The cultural and arts agenda, is contributing to the provision of sufficient recreational activities for children	GREEN	GREEN	<p>Swansea's Cultural Services section provide a wide range of recreational opportunities for Children and Young People as part of their Cultural Offer. In particular, Swansea Libraries work closely with the Play Sufficiency Team to ensure their programme for children is playful.</p> <p>Source: Childcare and Play Sufficiency Manager.</p>		

Play Sufficiency Assessment Template

LA Ref No	Criteria	RAG Status 2019	RAG Status 2022	Evidence to support strengths	Shortfalls	Identified actions for Action Plan
D52	The Local Authority Youth Service provides for children's opportunities for leisure and association	GREEN	AMBER	<p>Swansea's Early Help Service have overarching responsibility for the Youth Offer in Swansea. Due to Covid restrictions our offer has varied over the past 18 months to reflect lockdown restrictions. The offer is currently fluid but under 'normal' circumstances all of the below is offered up across 5 geographical areas covering the whole of Swansea.</p> <p>Youth Hubs, are an open Access provision, for young people aged between 11years – 18 years, they are situated across 5 geographical areas, across the City and County of Swansea at Stadwen, Gorseinon, Blaenymaes, Brynhyfryd and Townhill. The Hubs have Youth workers, who provide and</p>	There has been a significant loss of youth provision and COVID has had an even greater impact.	<p>D52a:Play Sufficiency Team to engage with Early Help Youth Service to organise on-going engagement sessions with C&YP to create better play opportunities.</p> <p>D52b:Sufficiency Assessment Support Officer to research the impact of COVID on 11-18 year olds and create a LA surveys to help plan a way forward while working collaboratively with Early Help Youth Service.</p>

Play Sufficiency Assessment Template

LA Ref No	Criteria	RAG Status 2019	RAG Status 2022	Evidence to support strengths	Shortfalls	Identified actions for Action Plan
				<p>facilitate a safe environment within which young people can relax, have fun, feel secure, supported and valued. Young people have access to informal learning opportunities, information and guidance around a whole range of issues, meaning that they are better informed about life choices and the opportunities that are available to them. By engaging through the opportunities provided, young people can learn to take greater control of their lives and be supported to recognise and resist the damaging influences which may affect them. A fundamental aspects of open access Youth provision, is that young people should choose to engage and access the provision when it is</p>		

Play Sufficiency Assessment Template

LA Ref No	Criteria	RAG Status 2019	RAG Status 2022	Evidence to support strengths	Shortfalls	Identified actions for Action Plan
				<p>required or needed by them, the workers build trust and retain a voluntary relationship with young people.</p> <p>We also acknowledge that the open-access youth Hubs offer, may, at times, be the only means of connecting with some young people and supporting them to re-engage in areas such as their education. Open-access provision also has a role to play, by offering a mechanism to identify potentially vulnerable young people and provide early intervention support, through lead work process.</p> <p>Types of activity provided:</p> <ul style="list-style-type: none"> • Arts and crafts • Themed projects. <p>Life skills workshops</p> <ul style="list-style-type: none"> • Information, advice and guidance • Signposting 		

Play Sufficiency Assessment Template

LA Ref No	Criteria	RAG Status 2019	RAG Status 2022	Evidence to support strengths	Shortfalls	Identified actions for Action Plan
				<p>In more recent times the youth workers have developed 'pop up club' undertaking the same work but in local centres or outdoors.</p> <p>The hubs also undertake street based work, modelled on the concept 'outreach'. Both pop up and street work undertake all types of youth work the difference is its undertaken in the places and spaces young people use.</p> <p>Expected outcomes for young people, who engage and participate through open access provision/alternative provision can be identified under three broad themes.</p> <p>Active participation: – young people enjoy and achieve – young people make a positive contribution – young</p>		

Play Sufficiency Assessment Template

LA Ref No	Criteria	RAG Status 2019	RAG Status 2022	Evidence to support strengths	Shortfalls	Identified actions for Action Plan
				<p>people have a voice – young people have the right to have their voice heard and opinion taken account of.</p> <p>Youth Work in Wales: Principles and Purposes – young people have improved well-being – young people enhance/develop their practical skills – young people learn to manage risk.</p> <p>Wider skills development: – team building – communication – problem solving – decision making – influencing others.</p> <p>Source: Early Help Hubs Manager</p>		

Supervised play provision

Where the Local Authority has assessed settings as part of the Childcare Sufficiency Assessments (CSAs), how have these settings been assessed in respect of the quality of play opportunities they provide and offer?

The 2017 Childcare Sufficiency Assessment identified the importance of outdoor play, in particular, on childcare provision and this has been communicated to settings and been a requirement for umbrella organisations to include as part of monitoring and quality assurance.

Additionally, as noted in Matter I, Flying Start guidance emphasises the importance of play as a tool for development and, as such, those settings are encouraged to incorporate a playful approach.

Since a restructure in 2017, Childcare & Play have benefitted from a much closer relationship within Swansea which inevitably has a positive impact on spreading play's messages. Pro-active development workers from Early Years Wales and Clybiau Plant Cymru Kids Clubs also assist this.

How has provision that is not part of the CSA been assessed in respect of the quality of play opportunities they provide and offer?

The Childcare and Play Sufficiency Assessments have been completed by the same lead officers which has provided a consistency of approach in terms of play opportunities offered. Additionally, provision that is not part of the CSA is subject to quality assurance visits, including by the Play Development Officer and Childcare & Play Sufficiency Manager. This includes those organisations funded via the Summer of Fun and Winter of Wellbeing.

Have there been challenges?

The primary challenge is what can only be described as the loss of playwork within Swansea. The re-location of the delivery arm of the former Swansea Play Service has been a key factor in this which has resulted in many changes.

A telling factor in the consultation with children & young people was that many were unaware of what a playworker did.

How can these be overcome?

Comments:

Matter D Supervised Provision is the area which has seen the most significant reduction over the past couple of years. The loss of the well established Play on Wheels mobile play team

Whilst it is hoped that the establishment of the the Early Years Early Help may eventually increase the play offer as suggested, it is hard to draw any other conclusion than the amount of staffed 'play' delivered by the local authority will be considerably reduced. This will be particularly felt by those outside of the remit of Early Help.

At the same time, the few existing play projects operating within Swansea either reduced their delivery due to Covid-19 or were otherwise unable to deliver as in previous years.

The picture of staffed play provision within Swansea is a bleak one and one that requires addressing.

The comparison below shows the difference between 2019 RAG status and 2022:

2019- 7 Green, 6 Amber, 0 Red

2022- 4 Green, 9 Amber, 0 Red.

Matter E: Charges for play provision

The Local Authority should consider which play opportunities involve a charge and the extent to which the Local Authority takes these charges into account in assessing for sufficient play opportunities for children living in low income families as set out in the Statutory Guidance.

RAG status

Criteria fully met.	X
Criteria partially met.	
Criteria not met.	

LA Ref No	Criteria	RAG Status 2019	RAG Status 2022	Evidence to support strengths	Shortfalls	Identified actions for Action Plan
E53	The Local Authority keeps records of the number of children living in low income families	GREEN	GREEN	This information is made available via statistics from the local authority's Research & Information Team who can provide a breakdown by age for all lower super output areas and wards that allows for the identification of need. Source: Childcare & Play Sufficiency Manager		
E54	The Local Authority keeps records of the number of children living in areas of deprivation	GREEN	GREEN	As E53		
E55	The Local Authority keeps	GREEN	GREEN	As E53		

Play Sufficiency Assessment Template

LA Ref No	Criteria	RAG Status 2019	RAG Status 2022	Evidence to support strengths	Shortfalls	Identified actions for Action Plan
	records of the number of children living in rural areas					
E56	The Local Authority keeps records of the number of disabled children and those with particular needs.	GREEN	GREEN	As E53		
E57	The Local Authority records the availability of no cost provision	GREEN	GREEN	Where possible, play provision is offered without charge and grant funding continues to support this. This free to access provision is recorded via the Play Sufficiency Team and Family Information Service so that those enquiring, including professionals supporting vulnerable families, can obtain details of projects. Source: Childcare & Play Sufficiency Manager		
E58	The Local Authority records the provision of no cost / low cost premises used for play provision	AMBER	AMBER	As stated, community buildings are encouraged to offer reduced rates for play projects and similar. As such, projects are informed of relevant premises.		

Play Sufficiency Assessment Template

LA Ref No	Criteria	RAG Status 2019	RAG Status 2022	Evidence to support strengths	Shortfalls	Identified actions for Action Plan
				<p>Additionally, Play Sufficiency staff have engaged with colleagues within asset management to consider offering reduced rental agreements for those premises that are being put up for sale.</p> <p>Source: Childcare & Play Sufficiency Manager</p>		
E59	The Local Authority records the provisions where grants or subsidies are available for play providers	GREEN	GREEN	<p>Swansea's play sector is able to access a range of internal grants to support their delivery and sustainability.</p> <p>The recent Welsh Government Playworks funding has additionally supported funding for community play.</p> <p>The Childcare & Play Sufficiency Team either lead or support project management of all eligible internal grant funds and, accordingly, are able to</p>		

Play Sufficiency Assessment Template

LA Ref No	Criteria	RAG Status 2019	RAG Status 2022	Evidence to support strengths	Shortfalls	Identified actions for Action Plan
				<p>ensure the needs of play projects are considered.</p> <p>Source: Childcare & Play Sufficiency Manager</p>		
E60	The Local Authority provides subsidised transport for children travelling to play opportunities	RED	AMBER	<p>During 2021, Swansea Council offered free bus travel during the holidays to support access to activities including play opportunities.</p> <p>The CPSM attempted to arrange subsidised transport with First Cymru, without success.</p> <p>Source: Childcare & Play Sufficiency Manager</p>	<p>This is currently only available during the holidays. In order for all children to have support to access activities, it would be beneficial if they had transport to travel to play opportunities at all times.</p>	<p>E60a: Play Sufficiency Team to work with transport team to ensure there is an understanding of the importance of children having access to play opportunities and how free transport makes these opportunities easier for children and young people.</p> <p>E60b: Play Sufficiency Team to engage with children and young people to understand their needs and preferences regarding transport to access play opportunities.</p>

Charge for play provision

How is the Local Authority ensuring that children have access to no or low-cost provision?

It must be recognised that the recent additional funding provided by Welsh Government via the All-Wales Play Opportunities Grant, including Summer of Fun & Winter of Wellbeing, have significantly increased free access to play opportunities.

Additionally, the considerable investment in enhancing public council play areas has, and will continue to, had a beneficial impact both on the level of free to access play experiences, but also the quality of the experiences.

Have there been challenges?

The loss of the Play on Wheels mobile play team has had a notable impact on access to free play opportunities, with free playwork provision now limited to those areas with established local projects.

How can these be overcome?

It is essential to ensure that free community playwork is maintained, or in most cases, developed. The proposal to introduce a Community Play Involvement Officer will hopefully support the establishment of new projects, as well as supporting current provision.

Comments:

In 2019, there were 6 Green, 1 Amber, 1 Red
this has changed in 2022 to 6 Green, 2 Amber.

Matter F: Access to space/provision

The Local Authority should consider all the factors that contribute to children’s access to play or moving around their community.

RAG Status

Criteria fully met.	
Criteria partially met.	X
Criteria not met.	

LA Ref No	Criteria	RAG Status 2019	RAG Status 2022	Evidence to support strengths	Shortfalls	Identified actions for Action Plan
F61	The Local Authority keeps an up to date record of the number of 20 mph zones/school safety zones in residential areas	AMBER	AMBER	The LA has an up to date record of these zones Since the 2013 Assessment, Swansea has introduced a further 33 20mph limit areas; 2013-14 x 12 2014-15 x 6 2015-16 x 15 2016-17 x 1 area scheme 2017-18 x 4 2018-19 x1 area scheme planned to date 2019-20 x 2 area schemes implemented 2020-21 x2 area schemes implemented	Dedicated budget was available however this is no longer provided by the Authority. Now LA relies on external grants or funding from s106/s38 planning agreements (New build) or other internal funding streams. Dedicated GIS mapping layer of 20mph limits and zones (linked to play areas) would be	F61a: Provide GIS mapping layers of 20mph limits and zones in longer term when staff resources allow. F61b: Play sufficiency team and Road safety team to work together to plot likely “play traffic” and any potential areas for conflict with road users.

Play Sufficiency Assessment Template

LA Ref No	Criteria	RAG Status 2019	RAG Status 2022	Evidence to support strengths	Shortfalls	Identified actions for Action Plan
				<p>LA Officers continue to liaise with Police (Go Safe) for enforcement of 20mph limits and zones particularly outside or on route to schools.</p> <p>Source: Assistant Road Safety Officer</p>	beneficial in providing overall data for CCS.	
F62	The Local Authority has an identified mechanism for assessing the impact of speed reduction and other road safety measures on the opportunity for children to play outside in their communities	GREEN	GREEN	<p>The Road Safety team have undertaken a thorough assessment of safety both prior to, and following installation of speed reduction and other measures.</p> <p>A number of new crossing facilities have been provided in communities in order to reduce the negative effect of segregated communities on busy roads and junctions where child pedestrians access local play and community facilities.</p> <p>Source: Assistant Road Safety Officer</p>	The information can be used to inform decisions on play opportunities, but would benefit from being subject to a mapping against areas of high play 'traffic'	F62a: Additional work to assess impact of road safety measures on play opportunities needs to take place.

Play Sufficiency Assessment Template

LA Ref No	Criteria	RAG Status 2019	RAG Status 2022	Evidence to support strengths	Shortfalls	Identified actions for Action Plan
F63	The Local Authority has a plan(s) to reduce the negative effect of busy roads and junctions through the introduction of speed reduction measures and provision of safe crossing points/routes for pedestrians and cyclists	AMBER	AMBER	<p>The Council's Road Safety Plan is currently being developed.</p> <p>Pressure is increasing from members (via requests from communities) to extend the arrangements to residential areas. However, WG proposals to reduce the default speed limit to 20mph on street lit areas will address this. The national rollout for this is currently targeted at April 2023.</p> <p>The LA is committed to the Active Travel (Wales) Act 2013 and the well Being Future Generations (Wales) act 2015. The LA has successfully obtained funding to enhance facilities to increase walking and cycling, thus supporting these Acts. There is a significant programme of</p>	<p>Limited budgets are prioritised to areas with highest number of KSI collisions and casualties with the aim of collision reduction. Areas with perceived risks (i.e. zero or low collisions) would not necessarily be a high priority for measures</p> <p>Feedback from the public highlights that congestion on main arterial roads means car users are increasingly finding alternative ways such as rat runs through residential areas, often past schools.</p>	

Play Sufficiency Assessment Template

LA Ref No	Criteria	RAG Status 2019	RAG Status 2022	Evidence to support strengths	Shortfalls	Identified actions for Action Plan
				<p>work to further develop the Active Travel Network in the coming years.</p> <p>Source: Assistant Road Safety Officer</p>		
F64	The Local Authority has a plan(s) to improve walking and cycle access to parks, outdoor play facilities and local leisure centres from residential areas	AMBER	AMBER	<p>LDP policy T 2 on Active Travel requires new development to enhance walking and cycling access on site or by off-site contributions.</p> <p>As part of the Active Swansea Plan, walking and cycling is encouraged.</p> <p>Source: Assistant Road Safety Officer</p>		
F65	There is potential for the Local Authority to take further action to reduce traffic speed and improve road safety to promote play opportunities	AMBER	AMBER	<p>All new schemes include measures to increase dedicated routes and links for cyclists e.g. New Kingsway scheme</p> <p>Areas with perceived risks (i.e. zero or low collisions) would not necessarily be a high priority for measures. However areas identified for</p>	Funding of schemes that reduce perceived risk.	F65a: Road Safety and Play Sufficiency Teams to collaborate on an initiative aimed at highlighting impact on play of traffic and traffic speed

Play Sufficiency Assessment Template

LA Ref No	Criteria	RAG Status 2019	RAG Status 2022	Evidence to support strengths	Shortfalls	Identified actions for Action Plan
				improvement that would encourage play opportunities, walking and cycling could be investigated. Source: Assistant Road Safety Officer		

DRAFT

Play Sufficiency Assessment Template

F66	The Local Authority uses road safety grants and/or other funding to support delivery of cycling training for children to national standards	AMBER	AMBER	<p>National Standards Cycle Training Levels 1 & 2 coordinated in-house and funded solely by the Welsh Governments Road Safety Grant. Two road safety officers have received training to become cycle training instructors to add to a growing bank of external cycle training instructors.</p> <p>2016-17 =850 2017-18=1000 2018-19=900 2019-20 =1045 2020-21=Nil –no training delivered due to COVID 2021-22 target =500 Source: Assistant Road Safety Officer</p>		
F67	The Local Authority uses road safety grants and/or other funding to provide pedestrian safety training for children	GREEN	GREEN	<p>Kerbcraft has been delivered in Swansea since 2000 and the road safety team has dedicated officers who deliver sessions throughout the 3 academic terms</p> <p>2016-17=1606 2017-18=1382 2018-19=1700 2019-20= 1755</p>	Kerbcraft relies solely on funding from the Welsh Government.	

Play Sufficiency Assessment Template

				<p>2020-21= 431 –limited training due to COVID 2021-22 target = 1737</p> <p>Source: Assistant Road Safety Officer</p>		
F68	<p>The Local Authority has an accessible and well-known way of arranging temporary road closures, to support more children to play outside their homes</p>	GREEN	AMBER	<p>COVID has hindered Play Streets from taking place over the last 2 years. However, discussions with community member, highways and legal have taken place throughout lockdown which have resulted in plans being made but with no current delivery team it may not be possible to support these plans.</p> <p>Source: Play Development Officer</p>	<p>Absence of play delivery staff is impacting on capacity to deliver play street projects.</p>	<p>F68a: By expanding the Play Sufficiency team in the near future, it may be possible to work with other departments in order to get Play Street taking place once more.</p>
F69	<p>The Local Authority refers to <i>Manual for Streets</i> when considering new developments and changes to the highway network/urban realm</p>	GREEN	GREEN	<p>As mentioned in 2019, the Local Planning Authority still seeks to apply <i>Manual for Streets</i> principles to new developments which has been updated by the requirement in Planning Policy for Wales in terms of 'Active and Social street</p>		

Play Sufficiency Assessment Template

				<p>designs'. This is translated to the local context by the recently updated Placemaking Guidance for Residential Developments SPG which has a specific section on 'Streets as Places'.</p> <p>The LA are also updating the Planning Development Contributions S106 SPG to clearly set out the hierarchy of formal play requirements (NEAP/LEAP/LAP etc) as well as when off site contributions will be sought to improve existing play/recreation.</p> <p>Source: Lead Placemaking and Heritage Officer.</p>	
F70	The Local Authority works to nationally recognised good practice guidelines when developing walking and cycling facilities	GREEN	GREEN	The LA works to nationally recognised guidelines when developing new cycling and walking facilities, and when improving existing facilities. These guidelines include ROSPA guidelines in relation to safe design and installation of any equipment, as well as	

Play Sufficiency Assessment Template

				<p>National Governing Body of Sport guidelines such as Welsh Cycling and/or British Cycling and Ramblers. Bikeability Guidelines has also been adopted throughout Wales for the delivery of cycle training.</p> <p>Source: Assistant Road Safety Officer</p>	
F71	The Local Authority uses child pedestrian road accident casualty data to inform the location and design of interventions which help children get around independently in their communities	AMBER	AMBER	<p>The LA uses collision data as supplied by South Wales Police which is reviewed on regular basis to inform interventions.</p> <p>Source: Assistant Road Safety Officer</p>	
F72	The Local Authority considers children's needs to access play opportunities when making decisions about public transport planning and expenditure	AMBER	AMBER	<p>During 2021 the Local Authority provided free transport during the school holidays, this created more opportunities for children to access play.</p>	<p>F72a: Play Sufficiency Team to work closer with public transport to try and create more play opportunities for children that need transport to access play.</p>
F21 (From D)	The requirements of disabled children are understood and provided for within traffic and transport initiatives	AMBER	AMBER	<p>It was previously recognised that those disabled children requiring transport to and from school were sometimes unable to access after school opportunities.</p>	

Play Sufficiency Assessment Template

				<p>There has been ongoing discussion between Play Sufficiency staff and local authority colleagues with the outcome being that this can be flexible but there may be additional costs and these will need to be covered.</p> <p>Source: Childcare & Play Sufficiency Manager</p>		
--	--	--	--	--	--	--

Information, publicity and events:

For children and families to take part in play opportunities, recreational activities and events it is necessary for them to know what is available in their area.

F73	The Local Authority has a clearly identified section on its website which gives information about play opportunities as described in the Statutory Guidance (play areas, play provision, clubs and their accessibility)	AMBER	AMBER	<p>The www.swansea.gov.uk website includes pages to promote play and play opportunities available. www.swansea.gov.uk/playsufficiency details the requirement to secure sufficient play opportunities and the findings and recommendations of the most recent assessment. This will be updated to include the 2022 PSA once approved. www.swansea.gov.uk/play provides information on services that deliver play</p> <p>Source: Childcare & Play Sufficiency Manager</p>	<p>These sites do not currently (March 2022) provide details of play sessions that can be accessed, which is something that traditionally was the case.</p>	
-----	---	-------	-------	---	---	--

Play Sufficiency Assessment Template

F74	The Local Authority provides information on access to play opportunities and contact for support if required	AMBER	AMBER	<p>The Family Information Service (FIS) team within the Local Authority are able to provide parents/carers with information, advice and assistance on Registered childcare, Unregistered Childcare, Children and young people's activities, Family support organisations. The Family Information Service can also provide information on:</p> <ul style="list-style-type: none"> -Help with the costs of childcare -Careers in childcare -Childcare training. <p>Parent/carers can access this information through the website. https://www.swansea.gov.uk/article/3435/Family-Information-Service-FIS Source: Sufficiency Assessment Support Officer</p>		F74a: Develop a Play Sufficiency Facebook page.
F75	The Local Authority supports and publicises events which encourage play opportunities and events for children and families	GREEN	AMBER	<p>The Early Years, Early Help Hub Manager plans to promote Summer Holiday outreach delivery through the use of social media including Facebook. However, this has not been done yet due to the team still embedding and plans being made for Summer 2022 play delivery.</p> <p>Source: Early Years, Early Hub Manager.</p>	There was a period of time during the pandemic where play sessions were not able to be carried out and therefore, there was no promotion of events which encouraged play.	F75a:It would be beneficial to undertake a promotional campaign detailing play's importance and why children & young people need to have opportunities to get out to play in their local communities.

Play Sufficiency Assessment Template

F76	The Local Authority publicises information which contributes to positive community attitudes to play	AMBER	GREEN	<p>The Play Sufficiency Team work closely with colleagues within the communications service on all press releases and publicity relating to play. This ensures that all coverage of play related developments emphasise play's role in supporting every child's healthy development, identifying it as an essential area for support. Source: Childcare & Play Sufficiency Manager</p> <p>The comment below from our Communications Team shows the impact of engaging with the public through social media. "As a concept, upgrading play areas is extremely popular. Positive engagement has been some of the best we've had." Source: Play Development Officer</p>		
F77	The Local Authority publicises information and support for parents to help them encourage their children to play	AMBER	GREEN	<p>The Local Authority has continued their commitment to supporting parents to help them encourage their children to play. This was done throughout the lockdowns by providing play bags, an online national play day and working alongside Play Wales to provide children and their families with resources.</p> <p>The Council's social media supported families by providing relevant information and support on play throughout the pandemic. Including ideas and tips. There was also extensive partnership work with the 3rd sector for sharing online resources.</p>		

Play Sufficiency Assessment Template

				<p>The Local Authority has also made all contact details Summer of Fun and Winter of Wellbeing recipient organisations available on its website</p> <p>Source: Play Development Officer</p>		
F78	<p>The Local Authority widely uses on-site signposting to safeguard and promote play</p>	AMBER	AMBER	<p>The Play Sufficiency Team have engaged with colleagues in cultural services in terms of whether it may be beneficial to look at play-specific signage within parks and open spaces.</p> <p>Source: Childcare & Play Sufficiency Manager</p>	<p>Parks and open spaces currently do not have this signage and further engagement with cultural services would be beneficial.</p>	<p>F78a- Play Sufficiency Team and partners to work towards producing play-specific play signage which encourages children and their families to engage in play together.</p>
F79	<p>The Local Authority engages with the media to encourage the positive portrayal of children playing in the local area</p>	AMBER	AMBER	<p>The LA took to social media in March 2022 to share videos and photos of the new playgrounds over Swansea that were funded capital investment. The videos shown children enjoying the new equipment and spending time with parents, carers, siblings and friends. There is hope that these promotional videos will encourage more families to go and visit the new play areas in their local area.</p> <p>Source: Sufficiency Assessment Support Officer</p>		

Access to space/provision

How has the Local Authority ensured collaboration to ensure children can move around their communities to increase access to opportunities for playing?

The anti-dog fouling campaign developed by the Play Sufficiency Team has increased awareness in the impact of dog mess on children and young people's ability to play safely within their community.

Have there been challenges?

The issue of children being able to get out to play in their local communities has long been a consideration, yet if anything it continues to become harder.

Despite initiatives intended to support children to get around safely, such as 20 mph zones, there are more cars on the road, seemingly going faster.

If one counter argument is that levels of pedestrian injuries are not increasing, a response is that many have just conceded that it is not safe anymore to let your child navigate local roads. Worryingly, most of those who 'speed' are parents carrying their children to and from school.

How can these be overcome?

To combine the two elements of this Matter, there needs to be a promotional / awareness campaign aimed at highlighting why children are increasingly denied opportunities to play out due to traffic speed and volume.

There appears to have been a cultural shift in recent years so that now all road users, not least parents, appear to have no regard for the fact that children will potentially be crossing a road at a point at which they are speeding. As well as working with colleagues across the authority on safety measures, more needs to be done to address this culture.

Comments

Information, publicity, events

How has the Local Authority positively used information to support access to play provision?

Swansea has a long-established process for using information and knowledge to support access to play provision. The Play Access Group and links with Swansea's Parent/Carer Forum are engaged to identify and respond to barriers to access.

Have there been challenges?

The main challenge to providing information on supported access to play has been the fact that this information needs to be up to date and maintained and capacity to achieve this continues to reduce.

How can these be overcome?

It is proposed that the role of Sufficiency Assessment Support Officer be continued post PSA submission. This role may be able to support the maintenance of a webpage or social media site that updates on supported access to play. This will be a particularly useful play sufficiency tool as it will allow for ongoing feedback including to specific play sufficiency questions e.g. *how can we make it safer to play out in the community?*

Comments:

2019- 6 Green, 14 Amber, 0 Red

2022- 6 Green, 14 Amber, 0 Red

Matter G: Securing and developing the play workforce

The Local Authority should provide information on the organisational structure of the policy area which manages the play agenda and the play workforce.

RAG status

Criteria fully met.	
Criteria partially met.	X
Criteria not met.	

Note – These criteria are specifically about Playwork: Playwork is a highly skilled profession that enriches and enhances play. It takes place where adults support children’s play but it is not driven by prescribed education or care outcomes. This includes both open access and out of school childcare settings.

LA Ref No	Criteria	RAG Status 2019	RAG Status 2022	Evidence to support strengths	Shortfalls	Identified actions for Action Plan
G80	The Local Authority keeps up to date information regarding the playwork workforce across the Local Authority (this should include the number of playworkers, playwork management structure, qualification levels, training opportunities and volunteers)	AMBER	AMBER	A workforce survey was undertaken as part of the Play (and Childcare) Sufficiency Assessments to gauge current staffing, qualifications and training needs. An additional workforce survey helped identify what the staff feel is needed. Source: Childcare & Play Sufficiency Manager	The professionals survey highlighted that playworkers do not feel valued and many are leaving the sector due to issues such as pay, short contracts and a sense of playwork not being a sustainable career.	G80a: LA and partners to explore ways of promoting playwork as a career. G80b: LA to focus on ways to upskill the workforce.

Play Sufficiency Assessment Template

LA Ref No	Criteria	RAG Status 2019	RAG Status 2022	Evidence to support strengths	Shortfalls	Identified actions for Action Plan
G81	The Local Authority supports all of the workforce to achieve the qualification level required by the Welsh Government's National Minimum Standards	AMBER	AMBER	<p>Prior to relocating to Early Help Hubs, the play workforce employed by the local authority were supported to achieve Childcare, Learning & Development (CCLD) qualifications relevant to their role.</p> <p>Source: Childcare & Play Sufficiency Manager</p>	During the past 3 years there have only been a limited number of play qualifications courses provided locally.	G81a: Include playwork qualifications as a target within workforce strategy.
G86	The Local Authority has a staff development budget ring fenced for play, including playwork	AMBER	AMBER	<p>There is a dedicated budget for the Family Information Service Training Programme which features play and playwork related training.</p> <p>Whilst specific budgets within core have been removed for both play and Workforce Development, there is a mechanism for allowing training to be funded from existing grant sources.</p> <p>Source: Childcare and Play Sufficiency Manager</p>		

Play Sufficiency Assessment Template

G88	There is a comprehensive range of Continuing Professional Development (CPD) opportunities available for playworkers in the area	GREEN	AMBER	<p>The PDO has regularly delivered unaccredited play training programmes through the FIS programme, local colleges and specific to funded playscheme teams. Covid has impacted on this delivery although a 1 day play training session was delivered 2020 and 2 Loose Parts sessions</p> <p>All external accredited opportunities are shared to both play and childcare settings. Source: Play Development Officer</p>	There is a recognition that there is currently a shortage of playworkers within Swansea.	G88a:It is recognised that there is a need to try and promote playwork as a profession and provide CPD opportunities to the playworkers we do have in the area.
G90	Training is available for volunteers and parents to develop their knowledge on skills in playwork	GREEN	AMBER	<p>Previously, volunteers and parent/carers had been able to access play specific training which was provided by the the Play Team as well as general training in the FIS Programme. However, the restructure has resulted in there being a reduced capacity particularly with level one training delivery to parent/carer by the Family Play Officers Source: Play Development Officer</p>	Level one and unaccredited training delivered to parent/carers by Family Play Workers has been on hold due to re-structure.	G90a:This is an action for the Play Sufficiency team to look at with the aim that the team could carry out some type of training for volunteers and parents.

Play Sufficiency Assessment Template

LA Ref No	Criteria	RAG Status 2019	RAG Status 2022	Evidence to support strengths	Shortfalls	Identified actions for Action Plan
G83	The Local Authority includes playwork within its Workforce Development strategies	GREEN	GREEN	<p>There has always been a recognition of the need to support opportunities to develop qualifications and continuous professional development opportunities for play within local workforce development strategies.</p> <p>The Play Development Officer has been engaged throughout development of the updated Early Years Workforce Strategy to ensure this continues.</p> <p>Source: Childcare & play Sufficiency Manager</p>		
G84	The Local Authority supports partners to deliver appropriate training to community groups, parents and volunteers	GREEN	AMBER	At the current time, there are a limited number of local organisations in a position to deliver training for community groups on play. Organisations such as Interplay and Play &	Current capacity and restructure limit the opportunities to offer this training	Look into opportunities to develop community-based play training including identifying appropriate attendees at a 'training the trainer' play advocacy session.

Play Sufficiency Assessment Template

				Leisure Opportunities Library offer specialist training on inclusion and this is supported but most play specific training is provided by the local authority itself. Source: Childcare & Play Sufficiency Manager		
--	--	--	--	--	--	--

Note – these criteria are about the Play workforce: This encompasses anyone employed whose role has an impact on children playing – those who may either directly facilitate their play, design for playing, or those with the power to give permission for children to play, or not.

G85	The Local Authority has undertaken a comprehensive training needs analysis for the play workforce as defined in the toolkit glossary and above	AMBER	AMBER	As stated above, a workforce survey was undertaken as part of the PSA which identified a range of training needs and requirements. Source: Childcare & Play Sufficiency Manager	Reduced capacity has impacted on the ability to offer CPD and other training to the local play workforce.	
G87	The Local Authority takes action to expand the variety of learning and development opportunities that are offered to staff	GREEN	GREEN	Continued Professional Development (CPD) is key for staff within the local authority and those staff responsible for play are encouraged to access ongoing training and development wherever possible.	This tends to be focussed on those employees within the Play Sufficiency Team and it would be beneficial for others whose roles impact on	G87a: Identify / develop appropriate training or awareness sessions for those staff whose role impacts play opportunities.

Play Sufficiency Assessment Template

				Source: Childcare & Play Sufficiency Manager	play to gain further knowledge on play and its benefits	
G89	There is a comprehensive range of CPD opportunities for a range of professionals who work with children	GREEN	AMBER	<p>Play Development Officer delivers play training and what is on offer in the FIS training booklet.</p> <p>The Play Development Officer has attended training with Play Wales/Ludicology to strengthen knowledge and understanding of play sufficiency and how to engage and train strategic officers.</p> <p>Source: Play Development Officer</p>	The impact of COVID has prevented the normal range of delivery of play training.	<p>Look to identify additional capacity to deliver training and awareness sessions</p> <p>Develop a range of training to increase understanding of play amongst key professionals</p>

LA Ref No	Criteria	RAG Status 2019	RAG Status 2022	Evidence to support strengths	Shortfalls	Identified actions for Action Plan
G91	Training awareness sessions are available for professionals and decision makers whose work impacts on children's opportunities to play	GREEN	GREEN	The Play Development Officer has attended training with Play Wales/Ludicology to strengthen knowledge and understanding of play sufficiency and how		As G90

				to engage and train strategic officers. This would be a natural progression to the Designing a Child Friendly Swansea Seminar. Source:Play Development Officer		
--	--	--	--	--	--	--

Securing and developing the play workforce

How has the Local Authority met the requirement to undertake or secure the managerial and delivery functions necessary to achieve sufficient play opportunities?

The local authority has used play sufficiency and the associated requirements as a focal point for managerial structure and delivery. The creation of a Childcare & Play Sufficiency Manager post emphasises this and their responsibility focusses on the requirement to secure sufficient play opportunities.

Additionally, following the re-structure that saw the delivery element of the former Play Service merge with Early Help Hubs, the drive towards ensuring play sufficiency was central to proposals for the re-building of a 'Play Sufficiency Team'.

How has the Local Authority ensured it understands and provides for the workforce development needs of the play workforce (as defined in *Wales: A Play Friendly Country and above*)?

The local authority ensures it remains up to speed on all relevant workforce development requirements by maintaining communication with the local play sector and engaging in relevant national networks. The dedicated roles of Childcare & Play Sufficiency Manager and Play Development Officer are directly required to address this.

How has the Local Authority ensured it understands and provides the playwork workforce (as defined in *Wales: A Play Friendly Country and above*)?

As above, the local authority has dedicated roles, i.e. Childcare & Play Sufficiency Manager and Play Development Officer, whose role is to understand and provide for the needs of the play workforce.

Have there been challenges?

The two major challenges are related in that they refer to the significant reduction in those delivering play and playwork, as well as the reduction in local authority capacity to respond to this and support existing playworkers.

It is evident that professionals are leaving the sector and very few seem to be choosing playwork as a career due to sustainability issues and lack of funding towards long-term roles.

How can these be overcome?

It is important to continue to provide grant funding support for our current play workforce, but the major focus needs to be on developing or re-building Swansea's play workforce and having the dedicated capacity to support them. The proposals to develop the Play Sufficiency Team including introducing a Community Play Involvement Officer will be key to this.

Comments

2019- 7 Green, 4 Amber, 0 Red.

2022- 3 Green, 8 Amber, 0 Red.

Play Sufficiency Assessment Template

Matter H: Community engagement and participation.

The Local Authority should consult widely with children, their families and other stakeholders on their views on play provision. It should also promote wide community engagement in providing play friendly communities.

RAG Status

Criteria fully met.	
Criteria partially met.	X
Criteria not met.	

LA Ref No	Criteria	RAG Status 2019	RAG Status 2022	Evidence to support strengths	Shortfalls	Identified actions for Action Plan
H92	The Local Authority promotes initiatives to engage relevant groups in enhancing play opportunities for children in its area.	GREEN	GREEN	<p>The Local Authorities on going investment in to play spaces has highlighted to ward members the importance of play, especially throughout COVID.</p> <p>The development of the Play Streets initiative has gone some way to supporting communities to enhance local play opportunities.</p> <p>Traditionally, grant funding and guidance has been available to community</p>		

Play Sufficiency Assessment Template

LA Ref No	Criteria	RAG Status 2019	RAG Status 2022	Evidence to support strengths	Shortfalls	Identified actions for Action Plan
				<p>groups looking to develop staffed provision and this still exists although, as documented, there are far fewer organisations taking this on.</p> <p>The recent success of Summer of Fun and Winter of Wellbeing has highlighted the number of groups providing playful activities taking place in the community which has helped us engage with some that we haven't before.</p> <p>Source: Play Development Officer</p>		
H93	<p>The Local Authority promotes community engagement in:</p> <ul style="list-style-type: none"> - making space available and suitable for play - organising play events - positive attitudes towards children and play - training on the importance of play. 	GREEN	AMBER	<p>COVID has made an impact on this being carried out. However, social media has helped keep the community engaged and investment has highlighted the need for play.</p>	<p>Due to COVID and the play team restructure this is something that has been impacted and been made difficult to carry out.</p>	<p>H93a: With COVID restrictions beginning with ease in Wales, it is important the Play Sufficiency Team dedicate time to promote community engagement. The 2022 National Play Day will be an important event to re-engage with families we</p>

Play Sufficiency Assessment Template

LA Ref No	Criteria	RAG Status 2019	RAG Status 2022	Evidence to support strengths	Shortfalls	Identified actions for Action Plan
				<p>A National Play Day (NPD) book hunt was carried out during COVID to help encourage CYP and their families to get outdoors, especially in to parks and play spaces.</p> <p>We also facilitated an all day online NPD event in 2020 with partners that was launched by the Lord Mayor and well received.</p> <p>For 2021 the Early Help Hub delivered some scaled back NPD open access events.</p> <p>PDO distributed NPD/Summer of Fun merchandise to 3rd sector play partners, whom themselves were holding smaller events within the community.</p> <p>Additionally cabinet members, ward members and officers have been</p>		<p>have not seen in over 2 years.</p>

LA Ref No	Criteria	RAG Status 2019	RAG Status 2022	Evidence to support strengths	Shortfalls	Identified actions for Action Plan
				holding high profile launch events as refurbished play areas have been opening. Financially supporting 'Friends of' groups as well as being a link and lynchpin for connecting up services Source: Play Development Officer.		

Community engagement and participation.

How has the Local Authority effectively used existing mechanisms for children’s participation and family consultation processes with regards to play?

There is regular consultation wherever practicable. This is usually carried out in schools with school council which gives us a fuller response across the year groups. We also carry out onsite consultation although this has been difficult with COVID.

Where consultations has been difficult to carry out, recent historical consultations have been used, gleening information we already have.

We regulary consult with parent/carers through the parent/carer forum and play access group.

We also used a number of surveys to understand the opinions of all members of the public.

Swansea Council has a commitment to the UNCRC particularly Article 12 in this case.

More recently consultation has been valued and recognised as a valued tool across Directorates e.g City Centre Regen/Housing Developments/Mumbles Foreshore.

Have there been challenges?

The current lack of capacity within the team inhibits consultation opportunities.

The COVID restrictions has impacted on consultation opportunities although between lockdowns the Play Development Officer has managed to carry some consultation and sites visits with children and one online opportunity.

The restructure of Play Delivery Service and the Play on Wheels team has limited opportunities to support thorough ad hoc consultation.

How can these be overcome?

By having a Community Play Involvement Officer there will be further opportunities to engage with children and young people as well as the wider community.

By using 3rd sector partners more effectively, there would be greater chance of hearing the views and opinions of more people.

Comments

In 2019 this matter had 2 Green RAG (Red, Amber, Green) status', this has now changed to 1 Green, 1 Amber for 2022 due to reasons metioned above.

Play Sufficiency Assessment Template

Matter I: Play within all relevant policy and implementation agendas

The Local Authority should examine all its policy agendas for their potential impact on children's opportunities to play and embed targets and action to enhance children's play opportunities within all such policies and strategies.

RAG Status

Criteria fully met.	X
Criteria partially met.	X
Criteria not met.	X

LA Ref No	Criteria	RAG Status 2019	RAG Status 2022	Evidence to support strengths	Shortfalls	Identified actions for Action Plan
194	There is a named person on the Local Public Service Board who champions children's play and ensures that the Play Sufficiency Assessment and Action Plan contribute to and are incorporated within the Well-being Plan	GREEN	GREEN	<p>At the time of completion, responsibility for children's play and play sufficiency falls under the portfolio of the Cabinet Member for Children's Services, Cllr Elliott King.</p> <p>However, play spaces comes within the portfolio of the Cabinet Member for Cultural Services, Cllr. Robert Francis-Davies.</p> <p>Additionally, this is subject to change following the May 2022 local elections.</p> <p>There is a strong case for saying that having two Cabinet Members considering play puts it in a stronger position and this appears to be the case.</p> <p>Source: Childcare & Play Sufficiency Manager</p>		

Play Sufficiency Assessment Template

LA Ref No	Criteria	RAG Status 2019	RAG Status 2022	Evidence to support strengths	Shortfalls	Identified actions for Action Plan
194B	The Well-Being Plan recognises the importance of play and contributes to the provision of rich play opportunities	GREEN	GREEN	<p>Swansea's Wellbeing Plan includes the importance of play as part of its 'Best Start in Life' in recognition of its contribution to healthy development and wellbeing.</p> <p>Objective four in the wellbeing plan (2018) mentions the want to create a vibrant, tolerant and welcoming Swansea where everyone has equal opportunities to live, work and play.</p> <p>https://www.swansea.gov.uk/localwellbeingplan</p> <p>When the 2018 Wellbeing plan was being developed, findings from the PSA were fed in.</p> <p>Source: Childcare & Play Sufficiency Manager</p>		

Education and schools

LA Ref No	Criteria	RAG Status 2019	RAG Status 2022	Evidence to support strengths	Shortfalls	Identified actions for Action Plan
195	Schools ensure that children are provided with a rich play environment for breaks during the school day	AMBER	AMBER	<p>Prior to restructure Swansea Play Service/Play on Wheels were supporting several schools to improve the play experience for their pupils. They were delivering 6 week loose parts programmes to different year groups whilst role modelling good practise and understanding to the school staff team.</p> <p>A particular success that made a difference was playwork with PRU schools using the Playbus. Playwork practice made significant behaviour improvements during the sessions – much to the surprise of the school staff</p> <p>Source: Play Development Officer</p>	<p>During the CYP engagement sessions, many school aged children told us they did not feel they had enough time for play during the school day and would benefit from having an afternoon break as well as a morning break.</p> <p>Source: Sufficiency Assessment Support Officer</p> <p>Due to the restrictions brought by the COVID pandemic, the quality of play times has been impacted. Many schools have</p>	<p>195a: There could be an opportunity for the Play Sufficiency team to engage with schools to ensure staff are aware of the benefits of children having access to a rich play environment for break times. Children have been deprived of play opportunities since the beginning of the pandemic and as we move forward it is vital staff have sufficient knowledge on the benefits of play.</p> <p>Source: Sufficiency Assessment Support Officer</p> <p>195b: Explore ways of re-introducing the Playful Schools initiative. SASO to work with PDO to create a working group to ensure</p>

Play Sufficiency Assessment Template

LA Ref No	Criteria	RAG Status 2019	RAG Status 2022	Evidence to support strengths	Shortfalls	Identified actions for Action Plan
				<p>Flexibility with session times is down to each individual school and some schools are providing richer play environments during break times than others.</p> <p>Sport and Health have started introducing the delivery of loose parts sessions in a small number of individual schools.</p>	<p>had to separate children in to bubbles for pupil and staff safety resulting in play being unable to take place as naturally as it once did.</p> <p>Source: Head of School Improvement Team.</p> <p>At the present time, direct playworker led delivery programmes to schools has ceased due to restructure and Covid restrictions.</p> <p>The last Play Sufficiency Assessment mentioned the Playful Schools Initiative which encouraged schools</p>	<p>schools are able to apply for the initiative once more.</p> <p>195c: Continue to explore collaborative play opportunities with Sport and Health department.</p>

Play Sufficiency Assessment Template

LA Ref No	Criteria	RAG Status 2019	RAG Status 2022	Evidence to support strengths	Shortfalls	Identified actions for Action Plan
					to ensure rich play opportunities were provided during break times. However, due to different factors such as COVID and ongoing capacity issues, this initiative has been put on hold.	
196	Schools provide play opportunities during out of teaching hours	AMBER	AMBER	In May 2021, the Governing body agreed to a proposal set out by Birchgrove Primary school to introduce a 'Free Play Friday'. The proposed model to be carried out beginning of the new school year aimed to change the start and finish times of the school day Monday to Thursday to create a shorter school day on a Friday to allow for an afternoon of free play. It was understood that not all parents would be able to collect their children by 1pm on a Friday and therefore,	The Free Play Friday initiative is currently only being carried out in 1 out of 79 primary schools in Swansea due to this being a pilot scheme.	196a: SASO to consult with children, teachers and school support staff to understand if this initiative has been successful and if so, what has made it successful or how could it be improved. This information could then be used to guide and advise other Swansea schools to carry out 'Free Play Fridays' this could then potentially result in children and young people having sufficient opportunities to play.

Play Sufficiency Assessment Template

LA Ref No	Criteria	RAG Status 2019	RAG Status 2022	Evidence to support strengths	Shortfalls	Identified actions for Action Plan
				the school provide a variety of activities which the children are consulted on to ensure the activities are chosen by those staying in school during this time.		
197	Schools provide access to school grounds for playing out of school times	AMBER	RED	<p>This is an area which has been the subject of much discussion in recent years. There is a recognition of the opportunities that exist from the resource that school grounds offer, however there are implications to accessing these grounds after school hours and that generally prevents it from occurring.</p> <p>Source: Childcare & Play Sufficiency Manager</p>	<p>A barrier to schools providing access to grounds out of school times is due to insurance issues and schools not being covered to allow this type of access out of school hours.</p> <p>The restrictions brought by the pandemic has made this increasingly more difficult for schools.</p> <p>Source: Head of Primary Team</p>	
198	Schools encourage children to walk and cycle to school	AMBER	AMBER	Guidance issued to schools (most recently February 2019) provides Briefing Notes on road safety that is	As with Matter F, increasingly traffic is being diverted off main arterial routes	198a:Work with colleagues and schools to identify ways in which walking and cycling

Play Sufficiency Assessment Template

LA Ref No	Criteria	RAG Status 2019	RAG Status 2022	Evidence to support strengths	Shortfalls	Identified actions for Action Plan
				<p>to be disseminated to families;</p> <p>Walking to school</p> <ul style="list-style-type: none"> If you are planning to let your child walk to school on their own for the first time, talk to them about the route they will use and the dangers they may encounter. Watch your child so that you can judge whether they have the ability to cross roads safely on their route to school. Children learn by watching adults. If walking your child to school, talk to them about how they can keep themselves safe 	<p>to side streets which often contain schools, thus increasing risk of harm to those going to school on foot or bike</p>	<p>to school can be made safer, particularly in terms of reducing traffic.</p>

Play Sufficiency Assessment Template

LA Ref No	Criteria	RAG Status 2019	RAG Status 2022	Evidence to support strengths	Shortfalls	Identified actions for Action Plan
				<p>and always try to set a good example when crossing the road.</p> <p>Cycling to school</p> <p>Cycling is a fun and healthy way to get to school, especially if a few simple precautions are taken:</p> <ul style="list-style-type: none"> • If your child is planning to cycle to school, check that their bike is in good working order. Ensure the brakes work, the tyres are pumped up and the saddle and handlebars are securely tightened. • Plan the route they will take and consider cycling it with them for the first time. 		

Play Sufficiency Assessment Template

LA Ref No	Criteria	RAG Status 2019	RAG Status 2022	Evidence to support strengths	Shortfalls	Identified actions for Action Plan
				<ul style="list-style-type: none"> RoSPA recommends that a helmet be worn at all times. <p>Source: Childcare & Play Sufficiency Manager / Swansea Schools Newsletter 12th February 2019</p>		
199	The Local Authority offers guidance to ensure schools understand and ensure that regular outdoor play is not curtailed	AMBER	AMBER	<p>The local authority has made available Play Wales' 'A Play Friendly School' particularly encouraging those schools signed up to the Playful Schools initiative to consider its recommendations.</p> <p>Source: Childcare & Play Sufficiency Manager</p>		<p>Disseminate guidance on play's importance to Swansea schools, including additional, e.g. Play Wales' 'A Play Friendly School – Guidance for a Whole School Approach' as well as locally developed guidance.</p> <p>Follow up if schools have found this useful or require further information.</p>

Town and Country Planning

LA Ref No	Criteria	RAG Status 2019	RAG Status 2022	Evidence to support strengths	Shortfalls	Identified actions for Action Plan
I100	The Local Development Plan recognises and addresses the outdoor play needs of children of various age groups and abilities	GREEN	GREEN	<p>The Local Development Plan 2010-2025 recognises and addresses the outdoor play needs of children of all age groups and abilities.</p> <p>It mentions that all sites with 100 homes or more should provide play opportunities for children of a range of ages, including opportunities for MUGA and other facilities to allow formal and informal play.</p> <p>All residential development must accord with the principles of providing good children’s play and leisure opportunities by: Ensuring that the design of residential areas prioritises the ability of residents, particularly children, to move freely, socialise and play; Incorporating ‘Homezone’ style street design and layouts where appropriate and the provision of opportunities for doorstep play;</p>		

Play Sufficiency Assessment Template

LA Ref No	Criteria	RAG Status 2019	RAG Status 2022	Evidence to support strengths	Shortfalls	Identified actions for Action Plan
				<p>Designing natural landscaping to create opportunities for informal play to complement, and be additional to, any formal play; and ensuring that play and leisure spaces, both formal and informal, are focal spaces, fit for purpose and well overlooked by development.</p> <p>Wherever possible, developers should consult with children and young people about the location and type of new or improved provision and their opinions should be taken into consideration in the design of development. Developers are also encouraged to enter into open dialogue with the Council to ensure that meaningful play opportunities are not lost because of future maintenance issues.</p> <p>https://archive.swansea.gov.uk/ldp</p>		

Play Sufficiency Assessment Template

Traffic and Transport

LA Ref No	Criteria	RAG Status 2019	RAG Status 2022	Evidence to support strengths	Shortfalls	Identified actions for Action Plan
I101	The local Transport Plan recognises the importance of local streets, roads and walking and cycling route in offering play opportunities for children of different ages and abilities	AMBER	AMBER	<p>The Joint Local Transport Plan for South West Wales (2015 - 2020) provides the statutory policy for transport initiatives in Swansea.</p> <p>Key schemes for the CCS under this policy include:</p> <p>City Centre Cycle Network: To create a traffic free environment in the city centre</p> <p>Walking & Cycling links to NCN routes: 'The City & County of Swansea benefits from a good quality strategic cycle network (NCN4 & NCN43). This scheme would construct a series of traffic-free paths to enhance and create these connections' (The Joint Transport plan, pg 35)</p> <p>The Joint Transport Plan for South West Wales 2015 – 2020 also highlights 'A number of school children within the City & County of Swansea who currently qualify for free school transport on the grounds of there not being a 'safe walking route to school'. This creates a revenue burden for the Council and does not serve to promote healthy lifestyles for the children. This scheme would create</p>		<p>I101a: There are plans in place to start working on the new Local Transport Plan during 2022.</p> <p>I101b: Possible case for a Welsh Government Transport Grant to address 'rat race' challenge and to further facilitate marginalised communities, and access to play for all.</p>

Play Sufficiency Assessment Template

LA Ref No	Criteria	RAG Status 2019	RAG Status 2022	Evidence to support strengths	Shortfalls	Identified actions for Action Plan
				walking and cycling routes for children who do not have the benefit of a 'safe walking route to school' Source: Transport Strategy Officer		
I102	The local Transport Plan identifies ways of assessing and addressing the needs of all groups including those which are often marginalised.	AMBER	AMBER	Section 1.9 of the Joint Transport Plan for South West Wales 2015 – 2020 makes reference to ' providing integrated and affordable access to businesses and for residents and visitors can help to stimulate sustainable economic development, reductions in deprivation and social exclusion and an increase in well-being. The City Region Authorities will work collaboratively with the WG, transport providers and users to plan, develop and deliver good quality access in South West Wales. https://www.swansea.gov.uk/article/9534/Local-transport-plan	There is no specific reference or consideration for those considered marginalised in the Joint Transport Plan.	

Play Sufficiency Assessment Template

Early Years Plans						
LA Ref No	Criteria	RAG Status 2019	RAG Status 2022	Evidence to support strengths	Shortfalls	Identified actions for Action Plan
I105	Early Years and Flying Start plans and services recognise the importance of play and contribute to the provision of rich play opportunities for younger children	GREEN	GREEN	<p>The Flying Start Childcare guidance makes reference to play throughout. It states that 'Children should learn through first-hand, play-based experiences and discovery, where experimentation and independence should be promoted'. It also mentions the following 'Play is crucial to the way children become self-aware and the way in which they learn the rules of social behaviour. Play is also fundamental to intellectual development. Play supports children in 'learning how to learn' and in acquiring high aspirations, a positive self image and a disposition to learning. Staff in Flying Start settings will, therefore, need to have a good understanding about the way children develop and learn and be able to facilitate learning through good quality, play-based activities'.</p> <p>https://gov.wales/sites/default/files/publications/2019-07/flying-start-childcare-guidance.pdf</p> <p>Swansea's Best Start Campaign includes play as the first of its 7 identified priority areas to support early years.</p> <p>Source: Sufficiency Assessment Support Officer.</p>		

Family policy and initiatives

LA Ref No	Criteria	RAG Status 2019	RAG Status 2022	Evidence to support strengths	Shortfalls	Identified actions for Action Plan
I107	Family support initiatives provide up to date information and support for parents to enable them to support their children to play	GREEN	AMBER	<p>The Early Help Hubs provide families with a referral with up to date information and support. There are plans in place to re-introduce Fresh Air Families- theraplay theme utilising the outdoors, this will become a referral based service and hope to be delivered in all of the 5 EHH hubs when all staff have been trained up– All staff have attended the online introduction to forest school training. This is to be promoted by the EHH. Source: Early Help Hub Manager.</p>	<p>COVID has impacted the amount of work that has been carried out over the last 2 years.</p> <p>Currently, the EHH provide information to families that have a referral which means the information and support is not accessible to all families at the moment. However, this is something that could change in the future as the Early Years, Early Help Team develops.</p>	<p>I107a:Facebook – to provide regular update about play for all ages 0 – 11, such as activities, ideas and information, as well as promotion of events happening.</p> <p>I107b:Play promotion – booklet being looked at for the summer holidays to provide activities to promote play and healthy eating ideas for families to use.</p>

Play Sufficiency Assessment Template

LA Ref No	Criteria	RAG Status 2019	RAG Status 2022	Evidence to support strengths	Shortfalls	Identified actions for Action Plan
I108	The local implementation of the Families First programme recognises the importance of play and contributes to the provision of rich play opportunities	GREEN	AMBER	<p>Play has been recognised as an essential component of the local Families First offer for many years. While no longer supporting the Play On Wheels and Family Play teams, the focus on Early Help Hubs continues to ensure family-based play in particular continues to be supported. The offer also includes open access play particularly during summer holidays.</p> <p>Source: Childcare & Play Sufficiency Manager</p>	The offer of open access play via Families First, particularly for 8-12 year olds outside priority areas, has reduced.	I108a: Progress the proposed Play Sufficiency Team development including appointment of a Community Play post to develop community play
I109	Plans to reduce the impact of Adverse Childhood Experiences recognises the importance of play and contributes to the provision of rich play opportunities	AMBER	AMBER	<p>The Early Help Hubs ensure play is used as a baseline within their work. There are plans in place to re-introduce Fresh Air Families- theraplay theme utilising the outdoors, this will become a referral based service and hope to be delivered in all of the 5 EHH hubs when all staff have been trained up– All staff</p>	All work carried out by EHH is for referred families and therefore, not available to all children within Swansea.	

Play Sufficiency Assessment Template

LA Ref No	Criteria	RAG Status 2019	RAG Status 2022	Evidence to support strengths	Shortfalls	Identified actions for Action Plan
				<p>have attended the online introduction to forest school training.</p> <p>Parent and toddler: All EHH hubs will be offering P & T sessions and as part of that planning there will be outdoor play sessions – “Welly walks” using the green spaces near the hubs, encouraging families to go outdoors no matter the weather and use the green spaces on their doorstep. Source: Early Years, Early Help Manager</p>		

Inter-generational policy and initiatives

LA Ref No	Criteria	RAG Status 2019	RAG Status 2022	Evidence to support strengths	Shortfalls	Identified actions for Action Plan
I110	There are a range of play based approaches to inter-generational activity	AMBER	AMBER	This is an area of minimal input but one in which there is a recognition of the value of increased work.		I110a Identify families for an intergenerational ‘play ranging’ exercise

Play Sufficiency Assessment Template

LA Ref No	Criteria	RAG Status 2019	RAG Status 2022	Evidence to support strengths	Shortfalls	Identified actions for Action Plan
				A previous National Playday carried a 'History of Play' theme whereby the event captured play experiences of previous generations.		I111a Develop training / guidance on play reflections that can be used to increase understanding of children's need to play.
I111	There is a creative approach to inter-generational activity which encourages better interaction between children of different ages	AMBER	AMBER	As above, older generations are encouraged to reflect on their childhood play experiences as a way of increasing understanding and empathy. This could be enhanced by working with Local Area Coordinators, among others, to be able to support adults to reflect. Source: Childcare and Play Sufficiency Manager		

Play Sufficiency Assessment Template

Health and Safety						
LA Ref No	Criteria	RAG Status 2019	RAG Status 2022	Evidence to support strengths	Shortfalls	Identified actions for Action Plan
I112	The Health and Safety policies explicitly recognise the value of children being able to experience risk and challenge	AMBER	AMBER	Play Development Officer leading in current discussion with H&S, Compliance and Flying Start Link Officers to explore legislation/'rules', risk risk benefit etc. This has opened up positive dialogue and contacts between services. Source: Play Development Officer		
I113	The Health and Safety policies and procedures incorporate the risk-benefit approach to health and safety assessments as recommended by the Health and Safety Executive (HSE)	AMBER	AMBER	Local health & safety policies continue to acknowledge work undertaken as part of the 2016 PSA in recognising the importance of risk-benefit analysis. Source: Childcare & Play Sufficiency Manager	Despite guidance from the HSE, local authorities will inevitably remain 'risk averse' due to litigation and insurance implications.	
I114	The Local Authority offers the provision of insurance through the Local Authority scheme to	RED	RED	This is the main area of regression during the course of the statutory duty		

Play Sufficiency Assessment Template

LA Ref No	Criteria	RAG Status 2019	RAG Status 2022	Evidence to support strengths	Shortfalls	Identified actions for Action Plan
	all third sector play providers and community councils			<p>to assess and secure play sufficiency.</p> <p>Prior to 2013, those community projects funded 'to act on our behalf' by delivering play projects were included under the Council's public liability insurance but this has since been removed.</p> <p>Source: Childcare & Play Sufficiency Manager</p>		

Play within relevant policy and implementation agendas

Please use this section to highlight successes of collaboration across policy areas to improve play opportunities.

The 2019 Assessment cited a key positive development being that play and the staff within it had 'become cool', i.e. it had increasingly been the case that other departments, services and officers were recognising the benefits of engaging with play in developing their own policy and practice.

Have there been challenges?

It is evident that there is still a lack of understanding around the benefits of play despite the fact major efforts have been made to raise this.

How can these be overcome?

The proposal to formerly establish a Play Sufficiency Team, with the introduction of a Play Sufficiency Officer and Community Play Involvement Officer, as well as making the post of Sufficiency Assessment Support Officer a permanent position will likely be the most effective way of addressing these challenges.

Comments:

Conclusion

This section should identify the key priorities for the Local Authorities in accordance with the regulations and described in the Statutory Guidance.

The 2022 Play Sufficiency Assessment has taken place at a time of change and uncertainty, not least as a result of the Covid pandemic that has affected everyone and everything. Whilst this has made the collection and analysis of data problematic at times, raising many more questions than answers, it is perhaps fortuitous to be able to document the current position at such a key transitional time.

The fact that the Assessment was completed at such a turbulent time has contributed to some changes to the status of Matters, but significantly, it has supported reflection that allows for the development of new approaches.

The period building up to submission has been one of endings, with the well-established local authority-led play delivery via Play on Wheels and Family Play being moved into Early Help Hubs as part of a more generic service for key families.

The pandemic itself has highlighted the role of play for children & young people. From a negative perspective, opportunities to play and interact with friends has reduced, particularly for those who are vulnerable or otherwise are unable to access space to play. But at the same time, we have seen how increased family time has allowed them to re-discover the value of play.

For a few fleeting months, we got to experience how things could be if families had more time together, less constraints through clubs or other commitments, if there were fewer cars on the roads, people were in less of a hurry and there were more opportunities to get out and about rather than confined to one place 5 days a week. But then as things returned to more of a normality, with all the benefits this brought, much of this was lost.

We also know that play has been, and will continue to be, an essential part of resilience and wellbeing at this crucial time. We were very fortunate that this was recognised by Welsh Government who provided funding for initiatives such as the Summer of Fun in recognition of this.

Capacity for play has reduced across the board in the period from 2019 to 2022, both within the local authority and its partners. This has made it harder to do all the things that are identified as being beneficial in developing and maintaining essential play opportunities.

At the same time, there is optimism over how the next manifestation of play in Swansea will materialise.

Collaborative work across the authority and its partners continues to produce results that maintain and enhance Swansea's play offer.

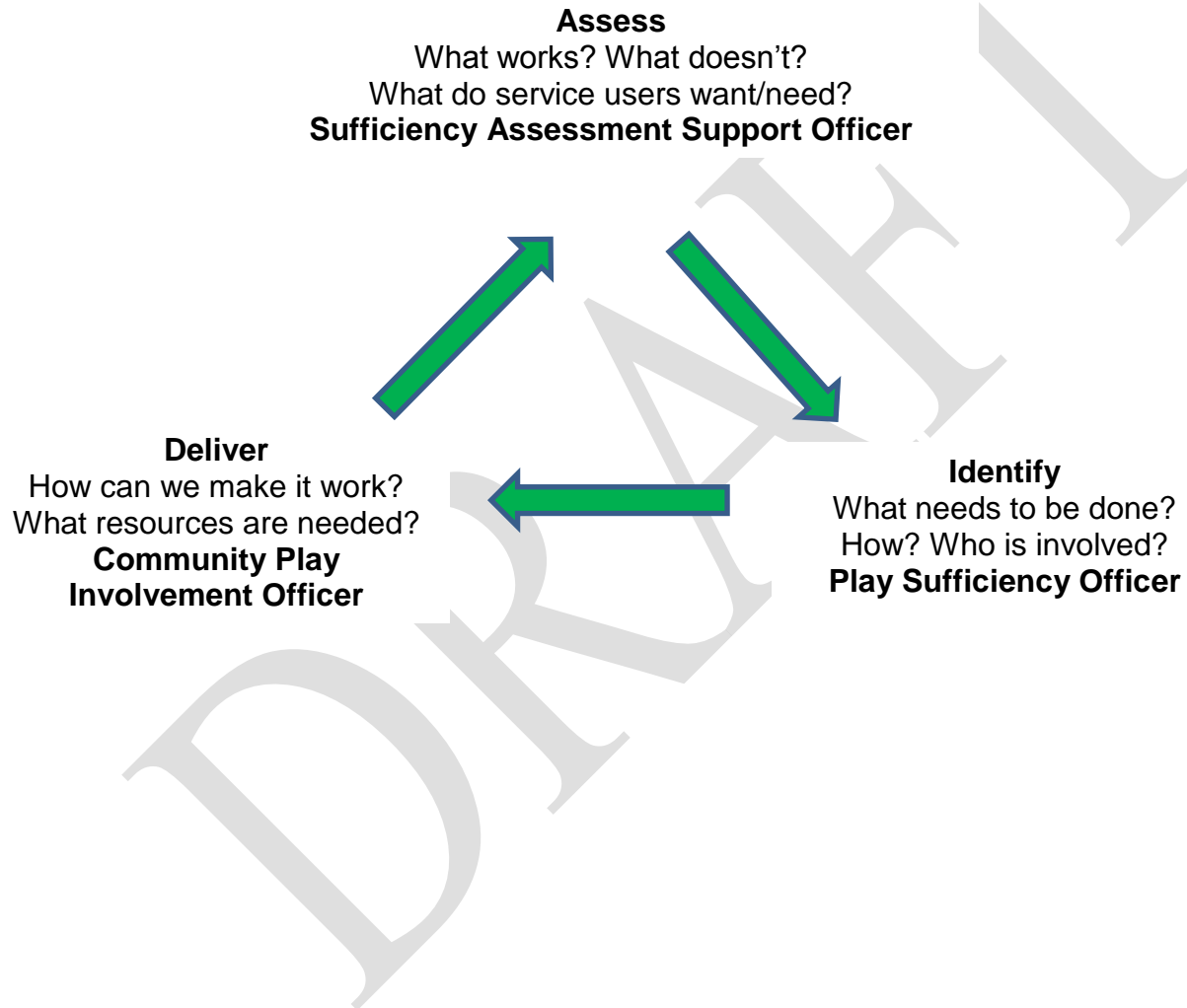
Continued engagement with schools, Early Help Hubs and Swansea communities will further ensure that play is recognised as essential for all children's healthy development.

Overall, it is hard to disagree that at time of submission in 2022, the infrastructure for play in Swansea is not as developed as it was at submission in 2019. Yet, there is certainly cause for optimism about the recent commitment to developing play spaces and the opportunity to develop a play sufficiency team.

The proposed Play Sufficiency Team (see appendix **) has the opportunity to provide a more dynamic and pro-active approach to respond to identified gaps in sufficiency, with the need to re-establish staffed community play as an early target.

This proposal has been identified by those who have been developing play in Swansea for the past 15 years recognising that there are 3 elements to achieving sufficiency and these will be met by having a dedicated lead for each.

It works on the principal of a cycle of 'AID' using play sufficiency as the focus and aim. There is an initial assessment of the situation, after which actions are identified, then delivery takes place. From there, there is a further assessment and the cycle continues.



Furthermore, a major strength of planning and coordination of play within Swansea has been the collaboration across directorates, as well as across the statutory and third sectors.

The Play Network would benefit from being re-established, as well as re-introducing an over-arching 'Board' or similar, much like the previous Play Network Board, to ensure that developments relating to play are considered by key decision-makers.

Way forward

This section should briefly introduce the Action Plan which sets out what steps need to be taken to improve the opportunities for children to play within the Local Authority area, including what mechanism and criteria were used to agree and prioritise actions. It should also describe the actions the Local Authority will take with regards to change in infrastructure, partnership working or mechanisms to ensure that it is well placed to deliver on the duty to secure sufficient play opportunities

The 2022 Play Sufficiency Assessment provides an extremely useful reference point for policy and delivery over the next 3 years. This is particularly key as it comes at a time of transition, but with a clear sense of what is needed to move forward, potentially to a place that is as strong as any in recent years.

At the time of submission of the 2022 Play Sufficiency Assessment, the re-location of Swansea Play Service and its members is still relatively recent and the impact of this is being identified. The overall reduction in playwork and community play, not solely as a result of this, is inevitably having an impact.

However, the recognition of the need to provide a positive response will hopefully counter this to a large degree and arguably the emergence of a new Play Sufficiency Team will have potential to offer a more responsive and impactful play presence.

In terms of moving forward, the first step is ownership and approval of the document and its recommendations from all stakeholders and decision-makers. This will take the form of reporting, feedback sessions and the production of a public summary.

The proposed re-structure and increased capacity of the Play Sufficiency Team is the most important development and there is clear appreciation of the additional AWPOG funding that will support this to happen. The best possible result will be that funding to support local play sufficiency is indeed key to bringing about change and enhancing the local play offer.

Swansea's Play Network and the proposed Play Sufficiency Board will be essential in monitoring progression and ensuring it is achieved collaboratively and effectively. Play sufficiency requires understanding, buy-in and a recognition that everyone has a part to play.

At the centre, the three roles of Childcare & Play Sufficiency Manager, Play Sufficiency Officer and Sufficiency Assessment Support Officer make a strong statement about the commitment to securing play sufficiency and there is a real confidence that the actions identified below can allow for hope of a positive 2025 Play Sufficiency Assessment.

Signed:Stephen Cable.....

Date:22nd June 2022.....



Actions to be taken to address the issues / shortcomings recorded in the Play Sufficiency Assessment

Proposed actions for the period of 1st April 2022 – 31st March 2023

Matter	Priorities	Targets	Links to other Matters	Resources, including costs	Funding source (new or existing funding streams)
Statutory Guidance-policy framework	<p>SG1:Ensure grant / core funding available for play is effectively managed to provide maximum benefit</p> <p>SG1: Ensure effective strategic planning and engagement around play across both provision and sufficiency</p>	<p>SG1a:Identify funding available, associated criteria and a plan for its usage</p> <p>SG1b:Re-establish a Play Sufficiency (formerly Network) Board to assess key findings and implementation of actions.</p> <p>SG1c:Re-establish wider Play Network including workstream groups</p> <p>SG1d:Establish Play Sufficiency Team to oversee, assess and implement sufficiency</p>	<p>All</p> <p>All</p>	<p>Officer Time</p> <p>Officer Time</p>	<p>Available funding identified (Core, AWPOG, CCG, SoF)</p>

Play Sufficiency Assessment Template

	<p>SG1- Promote the role of playwork as part of an awareness campaign on play's importance</p> <p>SG2- Focus on upskilling the workforce</p> <p>SG3- Re-establishing community play</p> <p>SG4- Listen to the opinions of parent/carers on how the Local Authority can improve play opportunities for children</p> <p>SG5- Work with parent/carers to understand concerns they have when children go out to play.</p>			<p>Officer time, promotional budget £1000.</p> <p>Training/ qualification costs</p> <p>Grant funding</p> <p>Officer time</p> <p>Officer time</p>	<p>Existing- core, AWPOG</p> <p>AWPOG, Children and Communities Grant.</p>
--	---	--	--	--	--

Play Sufficiency Assessment Template

Matter A: Population					
Matter B: Providing for diverse needs	B11 Ensure the play needs of those living in rural areas are met	<p>B11a: Expand play sufficiency team and introduce a community play involvement officer role to ensure needs are understood and met.</p> <p>B11b: Plans to create play and outreach timetables to be passed onto the wider teams such as primary schools, Health Visitors, Flying Start and promoted via social media sites.</p> <p>B11c: All outdoor play sessions in the school holidays to be available to all children and during the summer</p>	Matter D, F.	<p>Officer time, delivery cost</p> <p>An additional £42,000 a year</p> <p>Officer time</p> <p>Officer time</p>	AWPOG

Play Sufficiency Assessment Template

	<p>B12: The play requirements of Welsh language speaking children are understood and provided for</p>	<p>holiday sessions there will be provision of Open access play opportunities.</p> <p>B12a: Menter intend to fully re-establish the Welsh language playschemes during 2022.</p> <p>B12b: The Menter will continue to provide Welsh language play opportunities on school sites with their lunchtime clubs and playground games sessions, and will look to build and expand on their new initiative to support the bridging process through play.</p>	<p>Matter D, F, H</p>	<p>Partner, grant funding</p>	<p>SoF</p> <p>AWPOG</p>
--	---	--	-----------------------	-------------------------------	-------------------------

Play Sufficiency Assessment Template

	<p>B13: The play requirements of children from different cultural background are understood and provided for</p>	<p>B12c: The Menter and the Local Authority's events team will continue to collaborate on events, ensuring that there is Welsh language play provision where appropriate.</p> <p>B12d: Menter Iaith aim to fulfil their commitment in respect of the Winter of Wellbeing funding. They hope to offer interactive theatre sessions during February half term.</p> <p>B13a- It is recognised that it is vital we as a Local Authority are meeting every child's right to play and as mentioned above, this would</p>		<p>Officer time</p> <p>WoW funding</p> <p>Officer time to support Menter Iaith, Grant Funding</p>	
--	--	--	--	---	--

		<p>be a focus of any future planning.</p> <p>B13b-The Play Sufficiency team plans to consult with all children including those from different cultural backgrounds to ensure their play needs are being listened to.</p> <p>B13c: Fresh Air Families training for the Early Years Early Help Hub staff.</p> <p>B13d: Talks and meetings to be arranged to discuss providing this service within the EHH hub.</p>	<p>Matter D, F, H, I.</p>	<p>Officer time</p>	
--	--	--	---------------------------	---------------------	--

Play Sufficiency Assessment Template

	<p>B14: The play requirements and support needs of disabled children are understood and provided for.</p>	<p>B14a: To continue to help ensure that every child is given correct opportunities by the Play Sufficiency team consulting with children to listen to their views on play opportunities.</p> <p>B14b: To continue to ensure there is an increase of awareness of inclusivity and accessibility.</p> <p>B14c: Different departments have worked collaboratively over the years and this is something that needs to continue to create more play opportunities for children e.g.</p>			<p>Existing- EHH funding</p>
--	---	---	--	--	------------------------------

Play Sufficiency Assessment Template

	<p>B16: There is a well-known and agreed mechanism which is used to identify the need for separate</p>	<p>communication boards and accessible play areas. Source: Sufficiency Assessment Support Officer.</p> <p>B14d: Outdoor play sessions for ALN will be available in all school holidays. EYEH are also planning an ALN group for all EHH hubs.</p> <p>B16a: Play Sufficiency Team to develop a statement on access to play.</p>			
--	--	---	--	--	--

Play Sufficiency Assessment Template

	<p>provision for disabled children</p> <p>B18: Designated play space is provided and well maintained on gypsy traveller sites</p> <p>B19: The requirements of young carers are understood and provided for</p>	<p>B18a: Use future Capital funding to ensure that all or if not almost all play areas in Swansea are up to standard and accessible for all children.</p> <p>B18b: Discussions need to be held to arrange a meeting to discuss what support plan the EYEH team can offer for the traveller community.</p> <p>B19a: Play Sufficiency team to work collaboratively with the staff and Young People of Swansea's Young Carers Centre to ensure opinions</p>		<p>TBC</p>	
--	--	--	--	------------	--

		<p>and thoughts are heard to create better play opportunities.</p> <p>B19b: Investigate joint working between the Young Carers Service, Young Adult Carers project and the play sector</p> <p>B19c: Establish specific work with YMCA young Carers 8-18 and Swansea Carers Centre Young Adult Carers to provide bespoke tailored play and leisure opportunities</p> <p>B19d: To arrange a meeting and look at what service can be provided by the</p>		<p>Officer time</p> <p>Grant funding</p>	
--	--	---	--	--	--

Play Sufficiency Assessment Template

		<p>EYEH team for the LAC children.</p> <p>B20a: Play Development Officer and Sufficiency Assessment Support Officer to re-engage with the LGBT+ community.</p>		Officer time	
Matter C: Space available for children to play	<p>C29: The Local Authority assesses play spaces for play value and potential to increase in play use as set out in the Statutory Guidance</p> <p>C34: The Local Authority has removed 'no ball games' signs to encourage more</p>	<p>C29a: Continue cross directorate partnership work to assess and improve play areas with robust programme and investment.</p> <p>C34a: Further work to be carried out to ensure signage is reviewed to allow</p>		<p>Officer time</p> <p>Officer time</p>	

Play Sufficiency Assessment Template

	children playing in the community	better play opportunities. C34b: Play Sufficiency Team and partners to engage with children and young people regarding environmental improvements in their local areas and feedback to Housing Department.		Officer time	
Matter D: Supervised provision	D38: The Local Authority keeps an up to date record of all supervised playwork provision as described in the Statutory Guidance D39: The Local Authority offers playwork	D38a: Additional capacity to develop new community play provision and support existing provision must be sought. D39a: There is an opportunity to explore different options as to how		Creation of Community Play Involvement Officer post Officer time	AWPOG

Play Sufficiency Assessment Template

	<p>provision which offers a rich play environment as described in the Statutory Guidance</p> <p>D40: The Local Authority ensures that partners offering playwork provision are supported to offer rich play environments as described in the Statutory Guidance</p> <p>D41: Staffed playwork provision that the Local Authority provides meets the regulatory</p>	<p>different teams can work together to ensure outreach work takes place in the near future.</p> <p>D39b: Explore partnership peripatetic play delivery with sport and health.</p> <p>D40a: Play Sufficiency Team to re-establish training opportunities to further support partners that offer playwork provision.</p> <p>D41a: Play Sufficiency Team to work collaboratively the EHH to create positive play opportunities.</p>		<p>Officer time</p> <p>Training budget £2000 – Core</p> <p>Officer time</p>	<p>Core funding</p>
--	---	---	--	---	---------------------

Play Sufficiency Assessment Template

	<p>requirements and National Minimum Standards</p> <p>D43: Staffed playwork provision that the Local Authority's partners provide meets the regulatory requirements and National Minimum Standards</p> <p>D44: Staffed playwork provision across the Local Authority works to a recognised quality assurance programme</p>	<p>D43a: Play Sufficiency Team to work with Clybiau Plant Cymru and other partners to promote the benefits of registering with CIW to leaders of playwork provision across Swansea.</p> <p>D44a: Play Sufficiency team and partners to look at ways to increase capacity.</p>		<p>Officer and partner time, grant funding to support application</p> <p>Officer time</p>	<p>AWPOG</p>
--	--	---	--	---	--------------

Play Sufficiency Assessment Template

	<p>D52: The Local Authority Youth Service provides for children's opportunities for leisure and association</p>	<p>D52a: Play Sufficiency Team to engage with Early Help Youth Service to organise on-going engagement sessions with C&YP to create better play opportunities.</p> <p>D52b: Sufficiency Assessment Support Officer to research the impact of COVID on 11-18 year olds and create a LA surveys to help plan a way forward while working collaboratively with Early Help Youth Service.</p>		<p>Officer time</p> <p>Officer time</p>	
<p>Matter E: Charges for play provision</p>	<p>E60: The Local Authority provides subsidised transport for</p>	<p>E60a: Play Sufficiency Team to work with transport team to ensure there is an</p>		<p>Officer time, cost of transport TBC</p>	

Play Sufficiency Assessment Template

	children travelling to play opportunities	<p>understanding of the importance of children having access to play opportunities and how free transport makes these opportunities easier for children and young people.</p> <p>E60b: Play Sufficiency Team to engage with children and young people to understand their needs and preferences regarding transport to access play opportunities.</p>		Officer time	
Matter F: Access to space/provision	F61: The Local Authority keeps an up to date record of the number of 20 mph zones/school	F61a: Provide GIS mapping layers of 20mph limits and zones in longer term when staff resources allow.		Officer time	

Play Sufficiency Assessment Template

	<p>safety zones in residential areas</p> <p>F62: The Local Authority has an identified mechanism for assessing the impact of speed reduction and other road safety measures on the opportunity for children to play outside in their communities</p> <p>F65: There is potential for the Local Authority to take further action to reduce traffic speed and</p>	<p>F61b: Play sufficiency team and Road safety team to work together to plot likely “play traffic” and any potential areas for conflict with road users.</p> <p>F62a: Additional work to assess impact of road safety measures on play opportunities needs to take place.</p> <p>F65a: Road Safety and Play Sufficiency Teams to collaborate on an initiative aimed at highlighting</p>		<p>Officer time</p> <p>Officer time</p> <p>Promotional budget</p>	<p>Existing- Core</p>
--	--	---	--	---	------------------------------

Play Sufficiency Assessment Template

	<p>improve road safety to promote play opportunities</p> <p>F68: The Local Authority has an accessible and well-known way of arranging temporary road closures, to support more children to play outside their homes</p> <p>F72: The Local Authority considers children's needs to access play opportunities when making decisions about public transport planning and expenditure</p>	<p>impact on play of traffic and traffic speed</p> <p>F68a: By expanding the Play Sufficiency team in the near future, it may be possible to work with other departments in order to get Play Street taking place once more.</p> <p>F72a: Play Sufficiency Team to work closer with transport to address barriers to play for children that need more access to play.</p>		<p>Approx. £5000 towards the cost of play streets</p> <p>Officer time</p>	<p>Existing- AWPOG</p>
--	--	---	--	---	-------------------------------

Play Sufficiency Assessment Template

	<p>F74: The Local Authority provides information on access to play opportunities and contact for support if required</p> <p>F75: The Local Authority supports and publicises events which encourage play opportunities and events for children and families</p> <p>F78: The Local Authority widely uses on-site signposting to safeguard and promote play</p>	<p>F74a: Develop a Play Sufficiency Facebook page.</p> <p>F75a: It would be beneficial to undertake a promotional campaign detailing play's importance and why children & young people need to have opportunities to get out to play in their local communities.</p> <p>F78a: Play Sufficiency Team and partners to work towards producing play-specific play signage, which encourages</p>		<p>Officer time</p> <p>Part of matter C.</p> <p>Cost of new signage approx. £1,000-2,000.</p>	
--	---	---	--	---	--

Play Sufficiency Assessment Template

		children and their families to engage in play together.			
Matter G: Securing and developing the workforce	<p>G80: The Local Authority keeps up to date information regarding the playwork workforce across the Local Authority (this should include the number of playworkers, playwork management structure, qualification levels, training opportunities and volunteers)</p> <p>G81: The Local Authority supports all of the workforce to achieve the qualification level</p>	<p>G80a: LA and partners to explore ways of promoting playwork as a career.</p> <p>G80b: LA to focus on ways to upskill the workforce.</p> <p>G81a: Include playwork qualifications as a target within workforce strategy.</p>		<p>Officer time, third party play workforce development budget approx. £3000</p> <p>Officer time</p>	Existing- AWPOG

Play Sufficiency Assessment Template

	<p>required by the Welsh Government's National Minimum Standards</p> <p>G88: There is a comprehensive range of Continuing Professional Development (CPD) opportunities available for playworkers in the area</p> <p>G90: Training is available for volunteers and parents to develop their knowledge on skills in playwork</p>	<p>G88a:It is recognised that there is a need to try and promote playwork as a profession and provide CPD opportunities to the playworkers we do have in the area.</p> <p>G90a:This is an action for the Play Sufficiency team to look at with the hope that the team could carry out some type of training for volunteers and parents.</p>		<p>Dedicated Workforce development budget</p> <p>Officer time</p>	<p>AWPOG</p>
--	--	---	--	---	--------------

Play Sufficiency Assessment Template

		G89b: Develop a range of training to increase understanding of play amongst key professionals			
Matter H: Community engagement and participation	H93: The Local Authority promotes community engagement in: -making space available and suitable for play -organising play events -positive attitudes towards children and play -training on the importance of play.	H93a: With COVID restrictions beginning with ease in Wales, it is important the Play Sufficiency Team dedicate time to promote community engagement. The 2022 National Play Day will be an important event to re-engage with families we have not seen in over 2 years.		2022 NPD budget £3000 from SoF	New- Summer of Fun funding
Matter I: Play within all relevant policy and implementation agendas	I95: Schools ensure that children are provided with a rich play environment for	I95a: It is clear that there could be an opportunity for the Play Sufficiency team to engage with schools to		Officer time	

Play Sufficiency Assessment Template

	<p>breaks during the school day</p>	<p>ensure staff are aware of the benefits of children having access to a rich play environment for break times. Children have been deprived of play opportunities since the beginning of the pandemic and as we move forward it is vital staff have sufficient knowledge on the benefits of play.</p> <p>I95b: Explore ways of re-introducing the Playful Schools initiative. SASO to work with PDO to create a working group to ensure schools are able to apply for the initiative once more.</p>		<p>Officer time, small budget for Playful Schools approx. £2,000</p>	<p>AWPOG</p>
--	-------------------------------------	---	--	--	--------------

Play Sufficiency Assessment Template

	<p>I96: Schools provide play opportunities during out of teaching hours</p>	<p>I95c: Continue to explore collaborative play opportunities with Sport and Health department</p> <p>I96a: SASO to consult with children, teachers and school support staff to understand if this initiative has been successful and if so, what has made it successful or how could it be improved. This information could then be used to guide and advise other Swansea schools to carry out 'Free Play Fridays' this could then potentially result in children and young people having sufficient</p>		<p>Officer time</p> <p>Officer time</p>	
--	---	--	--	--	--

Play Sufficiency Assessment Template

		opportunities to play.			
	<p>I98: Schools encourage children to walk and cycle to school</p>	<p>I98a: Work with colleagues and schools to identify ways in which walking and cycling to school can be made safer, particularly in terms of reducing traffic.</p>		Officer time	
	<p>I99: The Local Authority offers guidance to ensure schools understand and ensure that regular outdoor play is not curtailed</p>	<p>I99a: Disseminate guidance on play's importance to Swansea schools, including additional, e.g. Play Wales' 'A Play Friendly School – Guidance for a Whole School Approach' as well as locally developed guidance.</p>		Officer time	

Play Sufficiency Assessment Template

	<p>I101: The local Transport Plan recognises the importance of local streets, roads and walking and cycling route in offering play opportunities for children of different ages and abilities</p> <p>I107: Family support initiatives provide up to</p>	<p>I99b: Follow up if schools have found this useful or require further information.</p> <p>I101a: There are plans in place to start working on the new Local Transport Plan during 2022.</p> <p>I101b: Possible case for a Welsh Government Transport Grant to address 'rat race' challenge, and to further facilitate marginalised communities, and access to play for all.</p> <p>I107a: Facebook – to provide regular update about play for all ages 0 – 11, such as activities,</p>		<p>Officer time</p> <p>Officer time</p> <p>Welsh Government Grant</p> <p>Officer time</p>	
--	---	--	--	---	--

Play Sufficiency Assessment Template

	<p>date information and support for parents to enable them to support their children to play</p> <p>I108: The local implementation of the Families First programme recognises the importance of play and contributes to the provision of rich play opportunities</p>	<p>ideas and information, as well as promotion of events happening.</p> <p>I107b: Play promotion – booklet being looked at for the summer holidays to provide activities to promote play and healthy eating ideas for families to use.</p> <p>I108a: Progress the proposed Play Sufficiency Team development including appointment of a Community Play post to develop community play</p>		<p>Workforce promotional budget</p> <p>Introducing Play Sufficiency Team</p>	
--	--	---	--	--	--

Play Sufficiency Assessment Template

	I110: There are a range of play based approaches to inter-generational activity	I110a: Identify families for an intergenerational 'play ranging' exercise		Officer time	
	I111: There is a creative approach to inter-generational activity which encourages better interaction between children of different ages	I111a: Develop training / guidance on play reflections that can be used to increase understanding or children's need to play.		Officer time	

References:

Play Wales (2017) *Creating accessible play spaces*. Cardiff: Play Wales. (P.42)

<https://www.playwales.org.uk/eng/publications/creatingaccessibleplayspaces#:~:text=The%20Creating%20accessible%20play%20spaces,along%20with%20friends%20and%20family>

Swansea Public Services Board (2018) *Local Wellbeing plan*. Swansea: Swansea Public Services Board.

<https://www.swansea.gov.uk/localwellbeingplan>

Swansea Council (2015) *Local Development Plan*. Swansea: Swansea

<https://archive.swansea.gov.uk/ldp>

The Joint Local Transport Plan for South West Wales (2015 - 2020) *Local Transport Plan*.
Children's Commissioner for Wales (2021) *Coronavirus and Me*. https://www.childcomwales.org.uk/wp-content/uploads/2021/02/CoronavirusAndMe_Jan21_ENG_110221_FINAL.pdf

DRAFT